

Product datasheet for **TA319158**

MAD2 (MAD2L1) Rabbit Polyclonal Antibody

Product data:

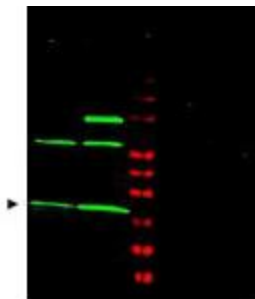
Product Type:	Primary Antibodies
Applications:	WB
Recommended Dilution:	ELISA: 1:2,000 - 1:10,000, WB: 1:500 - 1:2,000, IF: User Optimized
Reactivity:	Human
Host:	Rabbit
Isotype:	IgG
Clonality:	Polyclonal
Immunogen:	This affinity purified antibody was prepared from whole rabbit serum produced by repeated immunizations with a synthetic peptide corresponding to amino acid residues 3-13 of Human MAD2L1 protein.
Formulation:	0.02 M Potassium Phosphate, 0.15 M Sodium Chloride, pH 7.2
Concentration:	lot specific
Conjugation:	Unconjugated
Storage:	Store at -20°C as received.
Stability:	Stable for 12 months from date of receipt.
Gene Name:	MAD2 mitotic arrest deficient-like 1 (yeast)
Database Link:	NP_002349 Entrez Gene 4085 Human Q13257
Synonyms:	HSMAD2; MAD2
Note:	MAD2L1 (also called mitotic spindle assembly checkpoint protein, MAD2A, MAD2-like 1 and HsMAD2) is a component of the mitotic spindle assembly checkpoint monitors the process of kinetochore-spindle attachment and delays the onset of anaphase when this process is not complete. MAD2L1 inhibits the activity of the anaphase-promoting complex by sequestering CDC20 until all chromosomes are aligned at the metaphase plate. MAD2L1 is related to the MAD2L2 gene located on chromosome 1. A MAD2 pseudogene has been mapped to chromosome 14. This protein has a nuclear localization.
Protein Families:	Druggable Genome



[View online »](#)

Protein Pathways: Cell cycle, Oocyte meiosis, Progesterone-mediated oocyte maturation

Product images:



WB using Anti-MAD2L1 antibody shows detection of a predominant band at ~24 kDa corresponding to MAD2L1 (arrowhead) present in Jurkat (lane 1) and HeLa (lane 2) whole cell lysates (green). Specific band reactivity is blocked when the antibody is pre-incubated with immunizing peptide (lanes 4 and 5 respectively). The primary antibody was diluted to 1:1200. IRDye™800 conjugated Gt-a-Rabbit IgG [H&L] was used at 1:10000.