

Product datasheet for **TA319152**

BDNF Rabbit Polyclonal Antibody

Product data:

Product Type:	Primary Antibodies
Applications:	WB
Recommended Dilution:	ELISA: 1:10,000, WB: 1:1000
Reactivity:	Human
Host:	Rabbit
Isotype:	IgG
Clonality:	Polyclonal
Immunogen:	This IgG fraction antibody was prepared from rabbit antiserum after repeated immunizations with recombinant truncated human BDNF protein produced in E.coli.
Formulation:	0.02 M Potassium Phosphate, 0.15 M Sodium Chloride, pH 7.2
Concentration:	lot specific
Conjugation:	Unconjugated
Storage:	Store at -20°C as received.
Stability:	Stable for 12 months from date of receipt.
Gene Name:	brain-derived neurotrophic factor
Database Link:	NP_001137277 Entrez Gene 627 Human P23560
Synonyms:	ANON2; BULN2



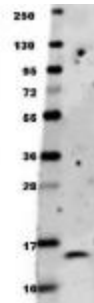
[View online »](#)

Note: BDNF is a member of the nerve growth factor family of trophic factors. In the brain BDNF has a trophic action on retinal, cholinergic, and dopaminergic neurons, and in the peripheral nervous system it acts on both motor and sensory neurons. Some protein domains of BDNF are identical with those of NGF and another neurotrophic factor, designated NT-3 (neurotrophin-3). It exists as monomers and homodimers, and binds to NTRK2/TRKB. Polyclonal antibodies raised against murine NGF have been shown to cross-react with both NT-3 and BDNF. The propeptide is N-glycosylated and glycosulfated. BDNF is converted into mature BDNF by plasmin (PLG). It is expressed in brain, and highly expressed in hippocampus, amygdala, cerebral cortex and cerebellum; it is also expressed in heart, lung, skeletal muscle, testis, prostate and placenta.

Protein Families: Adult stem cells, Druggable Genome, Embryonic stem cells, ES Cell Differentiation/IPS, Induced pluripotent stem cells, Secreted Protein, Transmembrane

Protein Pathways: Huntington's disease, MAPK signaling pathway, Neurotrophin signaling pathway

Product images:



Anti-human BDNF antibody in WB shows detection of recombinant human BDNF raised in E.coli. Recombinant truncated (0.1 ug, 27 kDa) protein was loaded onto and resolved by SDS-PAGE, then transferred to nitrocellulose. The membrane was incubated with anti-Human BDNF. After washing, membrane was probed with secondary antibody Dylight™ 649 Conjugated Anti-Rabbit IgG (H&L) (Goat) Antibody (611-143-122) diluted 1:20,000 in blocking buffer (p/n MB-070) for 30 min. at RT.