

## Product datasheet for **TA319151**

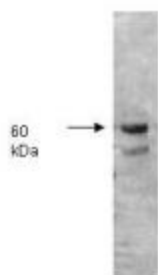
### Alkaline Phosphatase (ALPI) Rabbit Polyclonal Antibody

#### Product data:

Product Type:	Primary Antibodies
Applications:	WB
Recommended Dilution:	ELISA: 1:5,000 - 1:20,000, WB: 1:500 - 1:2,000
Reactivity:	Human
Host:	Rabbit
Isotype:	IgG
Clonality:	Polyclonal
Immunogen:	Alkaline Phosphatase [Human Intestine]
Formulation:	0.02 M Potassium Phosphate, 0.15 M Sodium Chloride, pH 7.2
Concentration:	lot specific
Conjugation:	Unconjugated
Storage:	Store at -20°C as received.
Stability:	Stable for 12 months from date of receipt.
Gene Name:	alkaline phosphatase, intestinal
Database Link:	<a href="#">NP_001622</a> <a href="#">Entrez Gene 248 Human</a> <a href="#">P09923</a>
Synonyms:	IAP
Protein Families:	Druggable Genome
Protein Pathways:	Folate biosynthesis, Metabolic pathways



[View online »](#)

**Product images:**

Both the antiserum and IgG fractions of anti-Alkaline Phosphatase (Human Intestine) are shown to detect under reducing conditions of SDS-PAGE the 60,000 dalton enzyme in cellular extracts. Approximately 10 ug of total protein is loaded per lane. A 1:5,000 dilution of the primary antibody is used followed by detection using HRP Goat-a-Rabbit IgG [H&L] diluted 1:4,000 and color development using 4-CN substrate until sufficient color develops. Other detection systems will yield similar results.