

## Product datasheet for **TA319148**

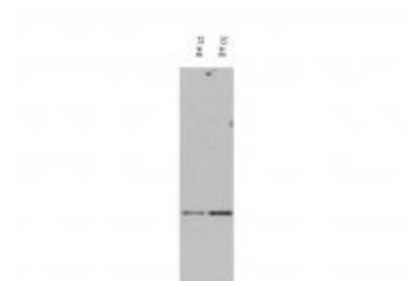
### DAXX Rabbit Polyclonal Antibody

#### Product data:

Product Type:	Primary Antibodies
Applications:	WB
Recommended Dilution:	ELISA: 1:7,000 –? 1:45,000, WB: 1:200 – 1:2000, IF: User Optimized
Reactivity:	Human, Mouse, Rat
Host:	Rabbit
Isotype:	IgG
Clonality:	Polyclonal
Immunogen:	This affinity purified antibody was prepared from whole rabbit serum produced by repeated immunizations with a synthetic peptide corresponding to amino acids 261-274 of human DAXX protein.
Formulation:	0.02 M Potassium Phosphate, 0.15 M Sodium Chloride, pH 7.2
Concentration:	lot specific
Conjugation:	Unconjugated
Storage:	Store at -20°C as received.
Stability:	Stable for 12 months from date of receipt.
Gene Name:	death-domain associated protein
Database Link:	<a href="#">NP_001135441</a> <a href="#">Entrez Gene 13163 Mouse</a> <a href="#">Entrez Gene 140926 Rat</a> <a href="#">Entrez Gene 1616 Human</a> <a href="#">Q9UER7</a>
Synonyms:	BING2; DAP6; EAP1
Note:	This antibody is suitable for Cancer, Immunology and Nuclear Signaling research. DAXX, the Death domain-associated protein 6 (also named Fas death domain-associated protein, ETS1-associated protein 1
Protein Families:	Druggable Genome, Stem cell - Pluripotency, Transcription Factors
Protein Pathways:	Amyotrophic lateral sclerosis (ALS), MAPK signaling pathway



[View online »](#)

**Product images:**

Western blot using affinity purified anti-DAXX antibody shows detection of DAXX in RWPE-1 cell extracts. The membrane was probed with the primary antibody diluted to 1:200, and further probed with peroxidase conjugated anti-Rabbit IgG at a 1:25,000 dilution. Personal Communication, Jie LIU, CCR-NCI, Bethesda, MD.