

## Product datasheet for **TA319146**

### Cyclin A2 (CCNA2) Rabbit Polyclonal Antibody

#### Product data:

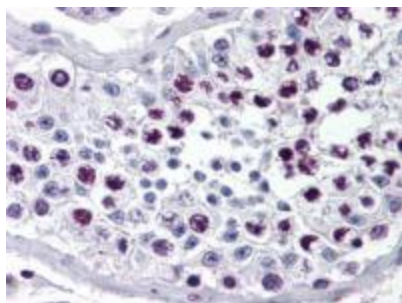
Product Type:	Primary Antibodies
Applications:	IHC, WB
Recommended Dilution:	ELISA: 1:5,000 - 1:20,000, WB: 1:500 - 1:5,000, IP: 1:100
Reactivity:	Human, Mouse, Rat
Host:	Rabbit
Isotype:	IgG
Clonality:	Polyclonal
Immunogen:	Anti-Cyclin-A Antibody was produced by repeated immunizations with a recombinant protein corresponding to the human cyclin A.
Formulation:	None
Conjugation:	Unconjugated
Storage:	Store at -20°C as received.
Stability:	Stable for 12 months from date of receipt.
Gene Name:	cyclin A2
Database Link:	<a href="#">NP_001228</a> <a href="#">Entrez Gene 12428 Mouse</a> <a href="#">Entrez Gene 114494 Rat</a> <a href="#">Entrez Gene 890 Human</a> <a href="#">P20248</a>
Synonyms:	CCN1; CCNA
Note:	Anti-Cyclin A detects cyclin a. Cyclin A is a member of the cyclin family. Cyclin A binds to S phase Cdk2 and is required for the cell to progress through the S phase. Cyclin A/ Cdk2 is inhibited by the complex p21CIP. Anti-cyclin-a Antibody is ideal for investigators involved in Cell Signaling, cell biology and Signal Transduction research.
Protein Families:	Druggable Genome, Stem cell - Pluripotency
Protein Pathways:	Cell cycle, Progesterone-mediated oocyte maturation



[View online »](#)

**Product images:**

Western Blot of Rabbit anti-Cyclin A antibody. Lane 1: T98G cells treated with normal (n). Lane 2: T98G cells treated with scrambled (scr). Lane 3: T98G cells treated with PIN1 knockdown (kd1). Load: 25 ug per lane. Primary antibody: Cyclin A antibody at 1:400 for overnight at 4°C. Secondary antibody: IRDye800™ rabbit secondary antibody at 1:10,000 for 45 min at RT. Block: 5% BLOTTO overnight at 4°C. Predicted/Observed size: 60kDa for Cyclin A.



Immunohistochemistry of Rabbit Anti-Cyclin A antibody. Tissue: human testes tissue. Fixation: formalin fixed paraffin embedded. Antigen retrieval: not required. Primary antibody: Cyclin A antibody at 1:500 for 1 h at RT. Secondary antibody: Peroxidase rabbit secondary antibody at 1:10,000 for 45 min at RT. Localization: Cyclin A is nuclear and cytoplasmic. Staining: Cyclin A as precipitated red signal with hematoxylin purple nuclear counterstain.