

## Product datasheet for **TA319145**

### PRDM1 Rabbit Polyclonal Antibody

#### Product data:

Product Type:	Primary Antibodies
Applications:	WB
Recommended Dilution:	ELISA: 1:65,000 - 1:80,000, WB: 1:1,000, IP: 5-10 ug/mL
Reactivity:	Human, Mouse, Rat, Dog
Host:	Rabbit
Isotype:	IgG
Clonality:	Polyclonal
Immunogen:	This affinity purified antibody was prepared from whole rabbit serum produced by repeated immunizations with a synthetic peptide corresponding to a region near the C-terminus of human, mouse, and rat PRDM1/BLIMP1.
Formulation:	0.02 M Potassium Phosphate, 0.15 M Sodium Chloride, pH 7.2
Concentration:	lot specific
Conjugation:	Unconjugated
Storage:	Store at -20°C as received.
Stability:	Stable for 12 months from date of receipt.
Gene Name:	PR domain 1
Database Link:	<a href="#">NP_001189</a> <a href="#">Entrez Gene 12142 MouseEntrez Gene 309871 RatEntrez Gene 481947 DogEntrez Gene 639 Human O75626</a>
Synonyms:	BLIMP1; PRDI-BF1

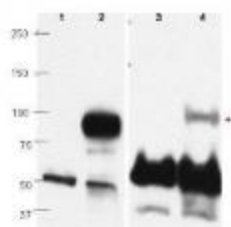


[View online »](#)

**Note:** PRDM1/Blimp1 (PR domain zinc finger protein 1, PR domain-containing protein 1, Beta-interferon gene positive regulatory domain I-binding factor, BLIMP-1, Positive regulatory domain I-binding factor 1, PRDI-binding factor 1, or PRDI-BF1, or Beta-lymphocyte-induced maturation protein 1) is one of several transcription factors which drives the maturation of B-lymphocytes into Ig secreting cells. In the nucleus, PRDM1/BLIMP1 functions as a transcriptional repressor that binds specifically to the PRDI element in the promoter of the beta-interferon gene. Transcription of the PRDM1 gene is increased upon virus induction. PRDM1/Blimp1 also interacts with PRMT5. Two alternatively spliced transcript variants that encode different isoforms have been reported.

**Protein Families:** Transcription Factors

### Product images:



WB using Anti-PRDM1/BLIMP1 antibody show detection of overexpressed PRDM1/BLIMP1 in whole transfected Raji cell lysate (lane 2) at ~88kDa. Lane 1 shows mock transfection in whole Raji cell lysate. Detection of endogenous PRDM1/BLIMP1 (lane 4) is illustrated in human plasma cell nuclear extract, but not in Raji whole cell nuclear extract (lane 3). The identity of the lower dark band at ~50-60kDa is unknown. Primary antibody was used at a 1:1000 dilution in 5% PBS-Tween.