

Product datasheet for **TA319142**

CUL4A Rabbit Polyclonal Antibody

Product data:

Product Type:	Primary Antibodies
Applications:	IHC
Recommended Dilution:	ELISA: 1:2,000 - 1:10,000, WB: 1:500 - 1:1,000, IHC: User Optimized
Reactivity:	Human
Host:	Rabbit
Isotype:	IgG
Clonality:	Polyclonal
Immunogen:	This antibody was prepared from whole rabbit serum produced by repeated immunizations with a synthetic peptide corresponding to amino acids 1-20 of Human Cul4A (N-terminus) coupled to KLH.
Formulation:	None
Concentration:	lot specific
Conjugation:	Unconjugated
Storage:	Store at -20°C as received.
Stability:	Stable for 12 months from date of receipt.
Gene Name:	cullin 4A
Database Link:	NP_001008895 Entrez Gene 8451 Human Q13619
Synonyms:	cullin 4A; OTTHUMP00000018753; OTTHUMP00000018754

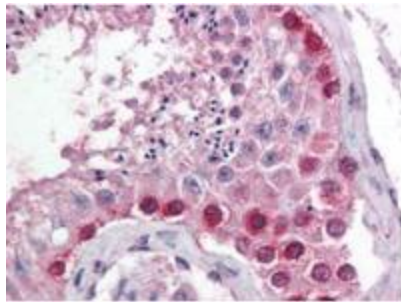


[View online »](#)

Note: Cullins assemble a potentially large number of ubiquitin ligases by binding to the RING protein ROC1 to catalyse polyubiquitination, as well as binding to various specificity factors to recruit substrates. Cullin 4a is an essential component of the SCF (SKP1-CUL1-F-box protein) E3 ubiquitin ligase complex, which mediates the ubiquitination of proteins involved in cell cycle progression, signal transduction and transcription. In the SCF complex, cul4A serves as a rigid scaffold that organizes the SKP1-F-box protein and RBX1 subunits. Cul4A may also contribute to catalysis through positioning of the substrate and the ubiquitin-conjugating enzyme. Cul4A also interacts with RNF7 and is part of a complex with TIP120A/CAND1, Cyclin E and RBX1.

Protein Pathways: Nucleotide excision repair, Ubiquitin mediated proteolysis

Product images:



Immunohistochemistry. anti-CUL4 antibody was diluted 1:500 to detect CUL4 in human testes tissue. Tissue was formalin fixed and paraffin embedded. No pre-treatment of sample was required. The image shows the localization of antibody as the precipitated red signal, with a hematoxylin purple nuclear counter stain.