

## Product datasheet for **TA319141**

### IL1 beta (IL1B) Rabbit Polyclonal Antibody

#### Product data:

Product Type:	Primary Antibodies
Applications:	WB
Recommended Dilution:	ELISA: 1:500 - 1:2,000, WB: 1:1,000, IHC: 1:100 - 1:200, IP: 1:400 - 1:800
Reactivity:	Human, Primate, Dog
Host:	Rabbit
Isotype:	IgG
Clonality:	Polyclonal
Immunogen:	This antibody was prepared by repeated immunizations with recombinant human IL-1 $\beta$ produced in E.coli. The MW of the recombinant 153 aa IL-1 $\beta$ was 17 kDa with the N-terminal amino acid at position alanine 117. This cleavage site is generated by the IL-1 $\beta$ converting enzyme (ICE, capase-1).
Formulation:	0.02 M Potassium Phosphate, 0.15 M Sodium Chloride, pH 7.2
Concentration:	lot specific
Conjugation:	Unconjugated
Storage:	Store at -20°C as received.
Stability:	Stable for 12 months from date of receipt.
Gene Name:	interleukin 1 beta
Database Link:	<a href="#">NP_000567</a> <a href="#">Entrez Gene 403974 Dog</a> <a href="#">Entrez Gene 3553 Human</a> <a href="#">P01584</a>
Synonyms:	IL-1; IL1-BETA; IL1F2
Note:	IL-1 beta (also known as Interleukin-1 beta, IL-1 $\beta$ and catabolin) is produced by activated macrophages. IL-1 stimulates thymocyte proliferation by inducing IL-2 release, B-cell maturation and proliferation, and fibroblast growth factor activity. IL-1 proteins are involved in the inflammatory response, being identified as endogenous pyrogens, and are reported to stimulate the release of prostaglandin and collagenase from synovial cells. IL-1 $\beta$ is a monomeric secreted protein that may be released by damaged cells or is secreted by a mechanism differing from that used for other secretory proteins.

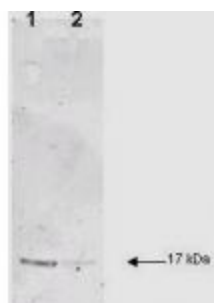


[View online »](#)

**Protein Families:** Druggable Genome, Secreted Protein

**Protein Pathways:** Alzheimer's disease, Apoptosis, Cytokine-cytokine receptor interaction, Cytosolic DNA-sensing pathway, Graft-versus-host disease, Hematopoietic cell lineage, MAPK signaling pathway, NOD-like receptor signaling pathway, Prion diseases, Toll-like receptor signaling pathway, Type I diabetes mellitus

**Product images:**



IL-1B was used at a 1:200 dilution incubated 1 h at RT to detect dog IL-1B by WB. Lane 1 and 2 were loaded with 2.5 ug and 500 ng of dog IL-1B respectively. The molecular weight of the detected band is estimated by comparison to molecular weight markers (not shown). Detection occurred using a 1:3,000 dilution of IRDye™800 conjugated Donkey anti-Rabbit IgG.