

Product datasheet for **TA319140**

Thyroid Hormone Receptor beta (THRB) Rabbit Polyclonal Antibody

Product data:

Product Type:	Primary Antibodies
Applications:	IF, WB
Recommended Dilution:	ELISA: 1:20,000 – 1:200,000, WB: 1:500 - 1:2,000, IP: 1:100
Reactivity:	Human, Mouse, Rat
Host:	Rabbit
Isotype:	IgG
Clonality:	Polyclonal
Immunogen:	Anti-TR β 1 antibody is affinity purified from whole rabbit serum produced by repeated immunizations with a synthetic peptide corresponding to a region near the N-terminal of human THRB isoform 1 protein.
Formulation:	0.02 M Potassium Phosphate, 0.15 M Sodium Chloride, pH 7.2
Concentration:	lot specific
Conjugation:	Unconjugated
Storage:	Store at -20°C as received.
Stability:	Stable for 12 months from date of receipt.
Gene Name:	thyroid hormone receptor beta
Database Link:	NP_000452 Entrez Gene 21834 Mouse Entrez Gene 24831 Rat Entrez Gene 7068 Human P10828
Synonyms:	C-ERBA-2; C-ERBA-BETA; ERBA2; GRTH; NR1A2; PRTH; THR1; THRB1; THRB2



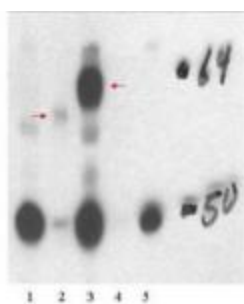
[View online »](#)

Note: Anti-Thyroid Hormone Receptor β 1 (TRB1) antibody is suitable for Cancer, Immunology and Nuclear Signaling research. The protein encoded by this gene is a nuclear hormone receptor for triiodothyronine. It is one of the several receptors for thyroid hormone, and has been shown to mediate the biological activities of thyroid hormone. Knockout studies in mice suggest that the different receptors, while having certain extent of redundancy, may mediate different functions of thyroid hormone. Defects in this gene are known to be a cause of generalized thyroid hormone resistance (GTHR), a syndrome characterized by goiter and high levels of circulating thyroid hormone (T3-T4), with normal or slightly elevated thyroid stimulating hormone (TSH). This TRB1 antibody is ideal for Immunology, Thyroid and Signal Transduction research.

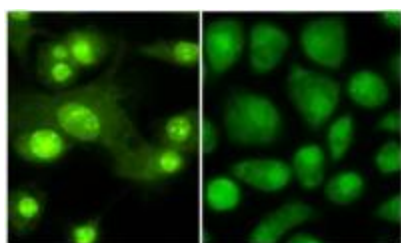
Protein Families: Druggable Genome, Nuclear Hormone Receptor, Transcription Factors

Protein Pathways: Neuroactive ligand-receptor interaction

Product images:



Western blot using affinity purified anti-THRB1 antibody shows detection of in vitro translated THRB1 (lane 2) and human thyroid stable cell line expressing THTRb1 (lane 3). No staining is evident in non transfected human thyroid cells (lane 1), over expressed THRA (lane 4) or HeLa stable cell line expressing THRA1 (lane 5). The band at ~62 kDa, indicated by the arrowheads, corresponds to THRB. Personal communication, H. Ying, NCI, Bethesda, MD



IF anti -THRB1 (Thyroid hormone receptor Beta 1) antibody TA319140 Tissue: Mouse Dendritic cells
Primary antibody: Anti THRB1 1:100 1 hr PBS 3% BSA (left) Normal rabbit IgG isotype control (right)
Secondary Ab: 488 dye conjugate 1:1000 1 hr.