

Product datasheet for **TA319139**

alpha 1 Antitrypsin (SERPINA1) Goat Polyclonal Antibody

Product data:

Product Type:	Primary Antibodies
Applications:	WB
Recommended Dilution:	ELISA: 1:20,000 - 1:100,000, WB: 1:2,000 - 1:10,000, IHC: 1:500 - 1:2,500
Reactivity:	Human
Host:	Goat
Clonality:	Polyclonal
Immunogen:	a1-Anti-Trypsin [Human Plasma]
Formulation:	0.02 M Potassium Phosphate, 0.15 M Sodium Chloride, pH 7.2
Concentration:	lot specific
Conjugation:	Unconjugated
Storage:	Store at -20°C as received.
Stability:	Stable for 12 months from date of receipt.
Gene Name:	serpin family A member 1
Database Link:	NP_000286 Entrez Gene 5265 Human P01009
Synonyms:	A1A; A1AT; AAT; alpha1AT; PI; PI1; PRO2275
Protein Families:	Druggable Genome, ES Cell Differentiation/IPS, Secreted Protein
Protein Pathways:	Complement and coagulation cascades



[View online »](#)

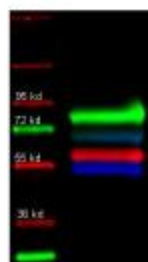
Product images:



Goat-anti-Alpha-1-Anti-Trypsin (TA319139, red), Rabbit anti-Transferrin, and Mouse-a-GST were used in a multiplex system to detect target proteins under reducing (R) conditions (+4% BME) in albumin depleted human serum with 320 ng of added GST. Membrane was probed with three primary antibodies at 1:1000 dilution. Detection shown was using DyLight549 Donkey anti-Rabbit IgG, DyLight 488 Donkey anti-Mouse IgG, and DyLight 649 Donkey anti-Goat IgG.



Goat anti Alpha-1anti-Trypsin antibody was used to detect Alpha-1anti-Trypsin under reducing (R) conditions. Reduced sample of purified target protein contained 4% BME and were boiled for 5 minutes. Samples of ~1ug of protein per lane were run by SDS-PAGE. Protein was transferred to nitrocellulose and probed with 1:3000 dilution of primary antibody. Detection shown was using Dylight 488 conjugated Donkey anti goat 1:10K in TBS/MB-070 1 hr RT).



Primary and Dylight conjugated secondary antibodies were used to detect: Human transferrin ; Alpha 1 anti trypsin and Human IgG in a multiplex fluorescent WB of human serum. Each primary antibody was diluted to 1:1000 in IRdye blocking buffer (MB-070) and incubated for 2 hrs at RT. Blot was 3X in TTBS, 1X in TBS and probed with secondary antibodies diluted 1:10000 in IRdye blocking buffer and incubated ~ 1hr at 4 degrees.