

## Product datasheet for **TA319138**

### alpha 1 Antitrypsin (SERPINA1) Goat Polyclonal Antibody

#### Product data:

Product Type:	Primary Antibodies
Applications:	WB
Recommended Dilution:	ELISA: 1:20,000 - 1:100,000, WB: 1:2,000 - 1:10,000
Reactivity:	Human
Host:	Goat
Clonality:	Polyclonal
Immunogen:	a1-Anti-Trypsin [Human Plasma]
Formulation:	0.02 M Potassium Phosphate, 0.15 M Sodium Chloride, pH 7.2
Conjugation:	Unconjugated
Storage:	Store at -20°C as received.
Stability:	Stable for 12 months from date of receipt.
Gene Name:	serpin family A member 1
Database Link:	<a href="#">NP_000286</a> <a href="#">Entrez Gene 5265 Human</a> <a href="#">P01009</a>
Synonyms:	A1A; A1AT; AAT; alpha1AT; PI; PI1; PRO2275
Protein Families:	Druggable Genome, ES Cell Differentiation/IPS, Secreted Protein
Protein Pathways:	Complement and coagulation cascades



[View online »](#)

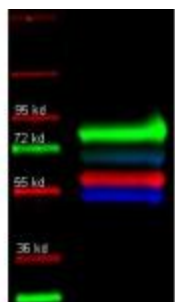
**Product images:**



Anti-Trypsin Polyclonal Antibody-Multiplex Fluorescent WB. Lane 1: molecular weight. Lane 2: Alpha-1-Anti-Trypsin (red), Rabbit anti-Transferrin, and Mouse-a-GST were used to detect target proteins under reducing conditions in albumin depleted human serum. Primary antibody: Each primary antibody at 1:1000. Secondary antibody: DyLight549 Donkey anti-Rabbit IgG (green), DyLight 488 Donkey anti-Mouse IgG (blue), and DyLight 649 Donkey anti-Goat IgG (red) secondary antibody at 1:10,000.



Western Blot of Goat anti Alpha-1 anti-Trypsin antibody. Lane 1: Alpha-1 anti-Trypsin under reducing conditions. Lane 2: none. Load: 1 ug per lane. Primary antibody: Alpha-1 anti-Trypsin antibody at 1:3000 for overnight at 4°C. Secondary antibody: Dylight 488 conjugated Donkey anti goat secondary antibody at 1:10,000 for 45 min at RT. Block: MB-070 overnight at 4°C. Predicted/Observed size: 55kDa for a-1 Anti-Trypsin. Other band (s): none.



WB of goat anti-Alpha 1 anti trypsin antibody. Lane 1: molecular weight. Lane 2: Human transferrin (green); Alpha 1 anti trypsin (red); and Human IgG (Blue) in a multiplex fluorescent WB of human serum. Load: 35 ug per lane. Primary antibody: Each primary antibody was diluted to 1:1000 for overnight at 4°C.