

Product datasheet for **TA319134**

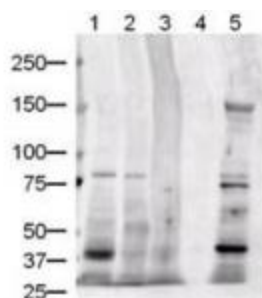
Jagged1 (JAG1) Rabbit Polyclonal Antibody

Product data:

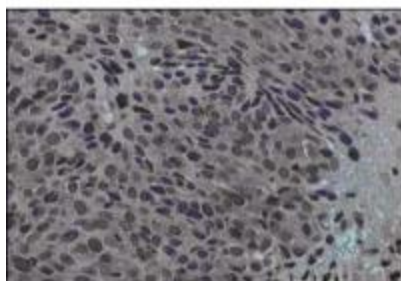
Product Type:	Primary Antibodies
Applications:	IF, IHC, WB
Recommended Dilution:	ELISA: 1:20,000 - 1:100,000, WB: 1:500 - 1:2,000, IHC: 1:100 - 1:500, IF: 1:200 - 1:1,000
Reactivity:	Human, Mouse
Host:	Rabbit
Isotype:	IgG
Clonality:	Polyclonal
Immunogen:	This protein A purified antibody was prepared from whole rabbit serum produced by repeated immunizations with a synthetic peptide corresponding to amino acids 110-125 of human Jagged-1 protein.
Formulation:	0.02 M Potassium Phosphate, 0.15 M Sodium Chloride, pH 7.2
Concentration:	lot specific
Conjugation:	Unconjugated
Storage:	Store at -20°C as received.
Stability:	Stable for 12 months from date of receipt.
Gene Name:	jagged 1
Database Link:	NP_000205 Entrez Gene 16449 Mouse Entrez Gene 182 Human P78504
Synonyms:	AGS; AHD; AWS; CD339; HJ1; JAGL1
Note:	Anti Jagged 1 Antibody recognizes the jagged 1 protein encoded by the JAG1 gene, that is the human homolog of the Drosophila jagged protein. Human jagged 1 is the ligand for the receptor notch 1, the latter a human homolog of the Drosophila jagged receptor notch. Mutations that alter the jagged 1 protein cause Alagille syndrome. Jagged 1 signaling through notch 1 has also been shown to play a role in hematopoies.
Protein Families:	Druggable Genome, ES Cell Differentiation/IPS, Transmembrane
Protein Pathways:	Notch signaling pathway



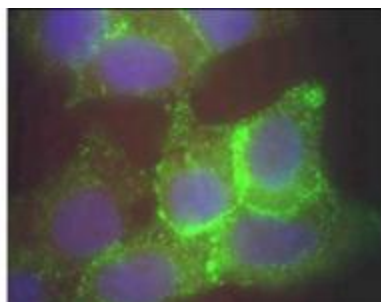
[View online »](#)

Product images:

WB using anti-Jagged-1 antibody shows detection of Jagged-1 protein in various whole cell lysates: human brain (lane 1), human kidney (lane 2), human liver (lane 3), and mouse liver (lane 5). Lane 4 contained sample buffer only. Each lane contains approximately 20 ug of lysate. Primary antibody was used at a 1:500 dilution. Predicted molecular weight is 134 kDa.



Immunohistochemical staining of human cervical cancer tissue (40X magnification) using Protein A purified anti-Jagged-1 antibody. Tissue was fixed with formalin and embedded in paraffin. Hematoxylin was used to counter-stain cells. A 1:100 dilution of primary antibody was used. Personal Communication. Martin Kast Laboratory.



Immunofluorescence microscopy using Protein A purified anti-Jagged-1 antibody of human corneal epithelial cells. Primary antibody was used at a 1:500 dilution. The Jagged1 (green staining) is localized to the cytoplasm and is consistent with reports in the literature. The nucleus is stained with Bis benzimide (blue). Personal Communication. Aihua Ma, University of Cardiff.