

Product datasheet for **TA319129**

Placental lactogen (CSH2) Rabbit Polyclonal Antibody

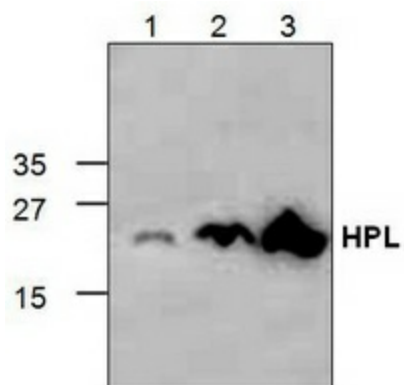
Product data:

| | |
|-----------------------|--|
| Product Type: | Primary Antibodies |
| Applications: | WB |
| Recommended Dilution: | WB: 0.5-4 ug/ml |
| Reactivity: | Human |
| Host: | Rabbit |
| Isotype: | IgG |
| Clonality: | Polyclonal |
| Immunogen: | E. coli expressed recombinant human Placental Lactogen |
| Formulation: | 100 µg (0.5 mg/ml) affinity purified rabbit polyclonal antibody in phosphate-buffered saline (PBS) containing 30% glycerol, 0.5% BSA, and 0.01% thimerosal. |
| Concentration: | lot specific |
| Purification: | Affinity purified |
| Conjugation: | Unconjugated |
| Storage: | Store at -20°C as received. |
| Stability: | Stable for 12 months from date of receipt. |
| Gene Name: | chorionic somatomammotropin hormone 2 |
| Database Link: | NP_066271 Entrez Gene 1443 Human P01243 |
| Background: | Human Placental Lactogen (HPL), also called human chorionic somatomammotropin, is a polypeptide placental hormone. Its structure and function is similar to that of growth hormone. It modifies the metabolic state of the mother during pregnancy to facilitate the energy supply of the fetus. Recombinant human Placental Lactogen is a 22.3 kDa protein. |
| Synonyms: | CS-2; CSB; hCS-B; PL |
| Protein Families: | Secreted Protein |



[View online »](#)

Product images:



Western blot analysis of placental lactogen using recombinant HPL.