

Product datasheet for **TA319127**

GH2 Rabbit Polyclonal Antibody

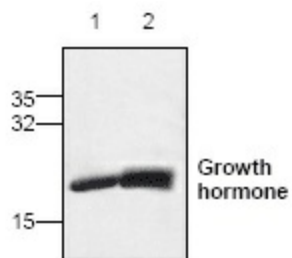
Product data:

Product Type:	Primary Antibodies
Applications:	WB
Recommended Dilution:	WB: 0.5-4 ug/ml
Reactivity:	Human
Host:	Rabbit
Isotype:	IgG
Clonality:	Polyclonal
Immunogen:	Recombinant human growth hormone
Formulation:	100 µg (0.5 mg/ml) affinity purified rabbit polyclonal antibody in phosphate-buffered saline (PBS) containing 30% glycerol, 0.5% BSA, and 0.01% thimerosal.
Concentration:	lot specific
Purification:	Affinity purified
Conjugation:	Unconjugated
Storage:	Store at -20°C as received.
Stability:	Stable for 12 months from date of receipt.
Gene Name:	growth hormone 2
Database Link:	NP_072052 Entrez Gene 2689 Human P01242
Background:	Growth hormone (GH) is a protein hormone which stimulates growth and cell reproduction in humans and other animals. It is a 191-amino acid, single chain polypeptide hormone which is synthesized, stored, and secreted by the somatotroph cells within the lateral wings of the anterior pituitary gland.
Synonyms:	GH-V; GHB2; GHL; GHV; hGH-V
Protein Families:	Druggable Genome, Secreted Protein
Protein Pathways:	Cytokine-cytokine receptor interaction, Jak-STAT signaling pathway, Neuroactive ligand-receptor interaction



[View online »](#)

Product images:



Western blot analysis using recombinant human growth hormone. Lane 1: 50ng, Lane 2: 250ng.