

## Product datasheet for **TA319124**

### PLGF (PGF) Rabbit Polyclonal Antibody

#### Product data:

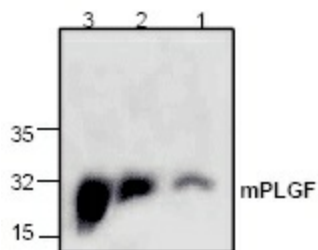
Product Type:	Primary Antibodies
Applications:	WB
Recommended Dilution:	WB: 0.5-4 ug/ml
Reactivity:	Mouse
Host:	Rabbit
Isotype:	IgG
Clonality:	Polyclonal
Immunogen:	E. coli expressed mouse PLGF
Formulation:	100 µg (0.5 mg/ml) affinity purified rabbit polyclonal antibody in phosphate-buffered saline (PBS) containing 30% glycerol, 0.5% BSA, and 0.01% thimerosal.
Concentration:	lot specific
Purification:	Affinity purified
Conjugation:	Unconjugated
Storage:	Store at -20°C as received.
Stability:	Stable for 12 months from date of receipt.
Gene Name:	placental growth factor
Database Link:	<a href="#">NP_002623</a> <a href="#">Entrez Gene 18654 Mouse P49763</a>
Background:	PLGF (also called Placenta Growth Factor, PIGF, PGF) is an angiogenic factor that belongs to the cysteine-knot superfamily of growth factors. PLGF is expressed in placental tissues, colon and mammary carcinomas. It signals through the VEGFR-1/FLT1 receptor and stimulates endothelial cell proliferation and migration. Recombinant mouse PLGF is a disulfide-linked homodimer containing two 142 amino acid polypeptide chains.
Synonyms:	D12S1900; PGFL; PIGF; PLGF; PIGF-2; SHGC-10760
Protein Families:	Druggable Genome, Secreted Protein



[View online »](#)

**Protein Pathways:** Bladder cancer, Focal adhesion, mTOR signaling pathway, Pancreatic cancer, Pathways in cancer, Renal cell carcinoma

**Product images:**



Western blot analysis using recombinant mouse PLGF. Lane 1: 50 ng, Lane 2: 250 ng, Lane 3: 1 ug.