

Product datasheet for **TA319123**

PLGF (PGF) Rabbit Polyclonal Antibody

Product data:

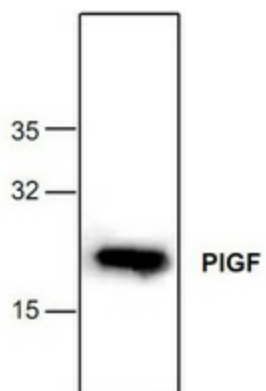
Product Type:	Primary Antibodies
Applications:	WB
Recommended Dilution:	WB: 0.5-4 ug/ml
Reactivity:	Human
Host:	Rabbit
Isotype:	IgG
Clonality:	Polyclonal
Immunogen:	Recombinant human PIGF
Formulation:	100 µg (0.5 mg/ml) affinity purified rabbit polyclonal antibody in phosphate-buffered saline (PBS) containing 30% glycerol, 0.5% BSA, and 0.01% thimerosal.
Concentration:	lot specific
Purification:	Affinity purified
Conjugation:	Unconjugated
Storage:	Store at -20°C as received.
Stability:	Stable for 12 months from date of receipt.
Gene Name:	placental growth factor
Database Link:	NP_002623 Entrez Gene 5228 Human P49763
Background:	PIGF-1(also called Placenta Growth Factor-1, PLGF, and PGF) is an angiogenic factor that belongs to the cysteine-knot superfamily of growth factors. PIGF-1 is expressed in placental tissues, colon and mammary carcinomas. It signals through the VEGFR-1/FLT1 receptor and stimulates endothelial cell proliferation and migration. Human PIGF-1 is a 29.7 kDa disulfide-linked homodimeric protein of two 131 amino acid polypeptide chains.
Synonyms:	D12S1900; PGFL; PIGF; PLGF; PIGF-2; SHGC-10760
Protein Families:	Druggable Genome, Secreted Protein



[View online »](#)

Protein Pathways: Bladder cancer, Focal adhesion, mTOR signaling pathway, Pancreatic cancer, Pathways in cancer, Renal cell carcinoma

Product images:



Western blot analysis of PIGF using recombinant human PIGF.