

## Product datasheet for **TA319122**

### IGFBP5 Rabbit Polyclonal Antibody

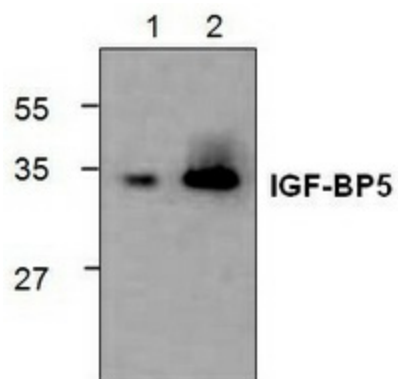
#### Product data:

|                       |   |
|-----------------------|---|
| Product Type:         | Primary Antibodies  |
| Applications:         | WB  |
| Recommended Dilution: | WB: 0.5-4 ug/ml   |
| Reactivity:           | Human   |
| Host:                 | Rabbit  |
| Isotype:              | IgG   |
| Clonality:            | Polyclonal  |
| Immunogen:            | E. coli expressed human IGF-BP5   |
| Formulation:          | 100 µg (0.5 mg/ml) affinity purified rabbit polyclonal antibody in phosphate-buffered saline (PBS) containing 30% glycerol, 0.5% BSA, and 0.01% thimerosal.   |
| Concentration:        | lot specific  |
| Purification:         | Affinity purified   |
| Conjugation:          | Unconjugated  |
| Storage:              | Store at -20°C as received.   |
| Stability:            | Stable for 12 months from date of receipt.  |
| Gene Name:            | insulin like growth factor binding protein 5  |
| Database Link:        | <a href="#">NP_000590</a><br><a href="#">Entrez Gene 3488 Human</a><br><a href="#">P24593</a>   |
| Background:           | Human IGF-BP5 is a cysteine-rich secreted protein produced by vascular smooth muscle cells. It is the major IGF-binding protein present in bone tissue and helps potentiate the action of IGF-I on smooth muscle cells, fibroblasts or osteoblasts. Studies show that IGF-BP5 acts as a growth inhibitor and pro-apoptotic agent in breast cancer cells. IGF-BP5 overexpressing mice show an increase in neonatal mortality, reduced female fertility, whole body growth inhibition, and retarded muscle development. |
| Synonyms:             | IBP5  |
| Protein Families:     | Druggable Genome, Secreted Protein  |



[View online »](#)

## Product images:



Western blot analysis of IGF-BP5 using recombinant human IGF-BP5.