

Product datasheet for **TA319121**

IGFBP1 Rabbit Polyclonal Antibody

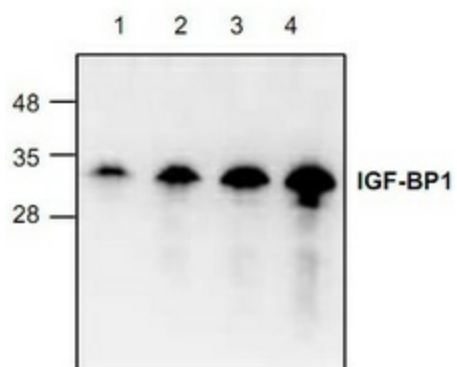
Product data:

Product Type:	Primary Antibodies
Applications:	WB
Recommended Dilution:	WB: 0.5-4 ug/ml
Reactivity:	Human
Host:	Rabbit
Isotype:	IgG
Clonality:	Polyclonal
Immunogen:	E. coli expressed human IGF-BP1 (Cat.# 4717-25)
Formulation:	100 µg (0.5 mg/ml) affinity purified rabbit polyclonal antibody in phosphate-buffered saline (PBS) containing 30% glycerol, 0.5% BSA, and 0.01% thimerosal.
Concentration:	lot specific
Purification:	Affinity purified
Conjugation:	Unconjugated
Storage:	Store at -20°C as received.
Stability:	Stable for 12 months from date of receipt.
Gene Name:	insulin like growth factor binding protein 1
Database Link:	NP_000587 Entrez Gene 3484 Human P08833
Background:	Human IGF-BP1 is a cysteine-rich secreted protein expressed in liver, decidual, and kidneys and is the most abundant IGF-BP in amniotic fluid. Levels of IGF-BP1 in serum are lowest after food. IGF-BP1 binds both IGF-I and IGF-II with equal affinity. Phosphorylated IGF-BP1 hinders IGF actions, whereas nonphosphorylated IGF-BP1 is stimulatory.
Synonyms:	AFBP; hIGFBP-1; IBP1; IGF-BP25; PP12
Protein Families:	Adult stem cells, Druggable Genome, Embryonic stem cells, ES Cell Differentiation/IPS, Secreted Protein



[View online »](#)

Product images:



Western blot analysis using recombinant human IGF-BP1. Lane 1: 20 ng, Lane 2: 50 ng, Lane 3:100 ng, Lane 4: 200 ng.