

## Product datasheet for **TA319116**

### **BMP3 Rabbit Polyclonal Antibody**

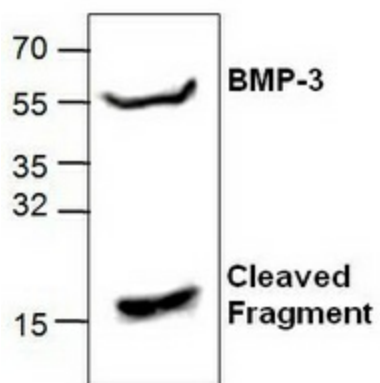
#### **Product data:**

Product Type:	Primary Antibodies
Applications:	WB
Recommended Dilution:	WB: 0.5-4 ug/ml
Reactivity:	Human, Mouse, Rat
Host:	Rabbit
Isotype:	IgG
Clonality:	Polyclonal
Immunogen:	Synthetic peptide surrounding amino acid 369 of mouse BMP-3
Formulation:	100 µg (0.5 mg/ml) affinity purified rabbit polyclonal antibody in phosphate-buffered saline (PBS) containing 30% glycerol, 0.5% BSA, and 0.01% thimerosal.
Concentration:	lot specific
Purification:	Affinity purified
Conjugation:	Unconjugated
Storage:	Store at -20°C as received.
Stability:	Stable for 12 months from date of receipt.
Gene Name:	bone morphogenetic protein 3
Database Link:	<a href="#">NP_001192</a> <a href="#">Entrez Gene 25667 Rat</a> <a href="#">Entrez Gene 110075 Mouse</a> <a href="#">Entrez Gene 651 Human</a> <a href="#">P12645</a>
Background:	BMPs (bone morphogenetic proteins) belong to the TGF-beta superfamily of structurally related signaling proteins. Members of this superfamily are widely represented throughout the animal kingdom and have been implicated in a variety of developmental processes. Proteins of the TGF-beta superfamily are disulfide-linked dimers composed of two 12-15 kDa polypeptide chains. As implied by their name, BMPs initiate, promote and regulate bone development, growth, remodeling and repair. In vivo studies have shown that BMP-3 can independently induce cartilage formation.
Synonyms:	BMP-3A
Protein Families:	Druggable Genome, Secreted Protein



[View online »](#)

## Product images:



Western blot analysis of BMP-3 expression in 3T3 cell lysate.