

Product datasheet for **TA319115**

GREM2 Rabbit Polyclonal Antibody

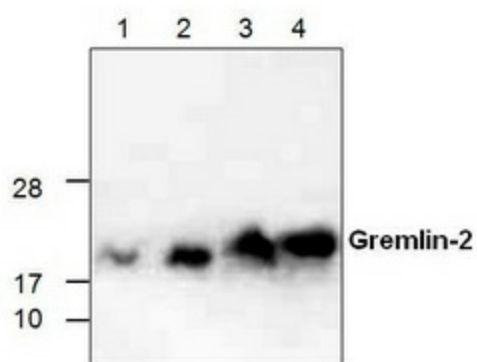
Product data:

Product Type:	Primary Antibodies
Applications:	WB
Recommended Dilution:	WB: 0.5-4 ug/ml
Reactivity:	Human, Mouse, Rat
Host:	Rabbit
Isotype:	IgG
Clonality:	Polyclonal
Immunogen:	E. coli expressed human Gremlin-2
Formulation:	100 µg (0.5 mg/ml) affinity purified rabbit polyclonal antibody in phosphate-buffered saline (PBS) containing 30% glycerol, 0.5% BSA, and 0.01% thimerosal.
Concentration:	lot specific
Purification:	Affinity purified
Conjugation:	Unconjugated
Storage:	Store at -20°C as received.
Stability:	Stable for 12 months from date of receipt.
Gene Name:	gremlin 2, DAN family BMP antagonist
Database Link:	NP_071914 Entrez Gene 23893 Mouse Entrez Gene 289264 Rat Entrez Gene 64388 Human Q9H772
Background:	Gremlin (also known as Increased in High Glucose Protein 2, IHG-2, Down-regulated in Mos-transformed cells protein, Drm) functions as a bone morphogenetic protein (BMP) antagonist. It acts by binding to, and forming heterodimers with BMP-2, BMP-4, BMP-7, thus preventing them from interacting with their cell surface receptors.
Synonyms:	CKTSF1B2; DAND3; PRDC
Protein Families:	Secreted Protein



[View online »](#)

Product images:



Western blot analysis using recombinant human Gremlin-2. Lane 1: 5 ng, Lane 2: 10 ng, Lane 3: 50 ng, Lane 4: 100 ng.