

Product datasheet for **TA319113**

Parathyroid hormone related protein (PTHrP) Rabbit Polyclonal Antibody

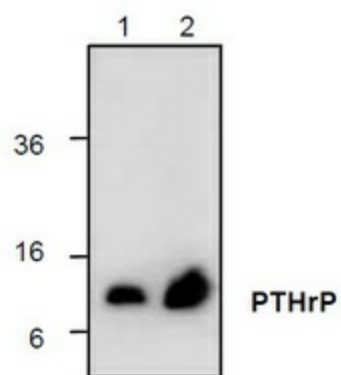
Product data:

Product Type:	Primary Antibodies
Applications:	WB
Recommended Dilution:	WB: 0.5-4 ug/ml
Reactivity:	Human
Host:	Rabbit
Isotype:	IgG
Clonality:	Polyclonal
Immunogen:	E. coli expressed human PTHrP
Formulation:	100 µg (0.5 mg/ml) affinity purified rabbit polyclonal antibody in phosphate-buffered saline (PBS) containing 30% glycerol, 0.5% BSA, and 0.01% thimerosal.
Concentration:	lot specific
Purification:	Affinity purified
Conjugation:	Unconjugated
Storage:	Store at -20°C as received.
Stability:	Stable for 12 months from date of receipt.
Gene Name:	parathyroid hormone-like hormone
Database Link:	NP_945317 Entrez Gene 5744 Human P12272
Background:	Parathyroid Hormone-like related Protein (PTHrP) is a member of the Parathyroid hormone family that is expressed in the mammary gland. It is known as a potent inhibitor of chondrocyte maturation. PTHrP is expressed by periarticular perichondrial cells and exerts its biological activity on PP-R expressing cells. During endochondral bone development PTHrP plays a major role in suppressing the onset of hypertrophic differentiation. It is also responsible for most cases of humoral hypercalcemia of malignancy. The antibody recognizes ~9.8 kDa of human PTHrP protein.
Synonyms:	BDE2; HHM; PLP; PTHR; PTHRP
Protein Families:	Druggable Genome, Secreted Protein



[View online »](#)

Product images:



Western blot analysis of PTHrP using recombinant human PTHrP.