

## Product datasheet for TA319112

### PTCRA Rabbit Polyclonal Antibody

#### Product data:

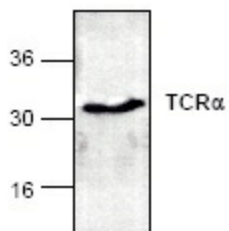
Product Type:	Primary Antibodies
Applications:	WB
Recommended Dilution:	WB: 0.5-4 ug/ml, IHC: 15-25 ug/ml, IP: 10-20 ug/ml
Reactivity:	Human, Mouse, Rat
Host:	Rabbit
Isotype:	IgG
Clonality:	Polyclonal
Immunogen:	Synthetic peptide surrounding amino acid 138 of human TCR $\alpha$
Formulation:	100 mg (0.2 mg/ml) immunoaffinity purified rabbit polyclonal antibody in phosphate-buffered saline (PBS) containing 30% glycerol, 0.5% BSA, and 0.01% thimerosal.
Concentration:	lot specific
Purification:	Affinity purified
Conjugation:	Unconjugated
Storage:	Store at -20°C as received.
Stability:	Stable for 12 months from date of receipt.
Gene Name:	pre T-cell antigen receptor alpha
Database Link:	<a href="#">NP_612153</a> <a href="#">Entrez Gene 19208 Mouse</a> <a href="#">Entrez Gene 116462 Rat</a> <a href="#">Entrez Gene 171558 Human</a> <a href="#">Q6ISU1</a>
Background:	TCR (T cell antigen receptor) recognizes foreign antigens and translates such recognition events into intracellular signals that elicit a change in the cell from a dormant to an activated state. TCR is a heterodimer composed of either $\alpha$ and $\beta$ or $\gamma$ and $\delta$ chains. The vast majority of circulating T cells (95%) express the $\alpha/\beta$ heterodimer while roughly 2-5% express the $\gamma/\delta$ heterodimer. CD3 chains and the CD4 or CD8 coreceptors are also required for efficient signal transduction through the TCR.
Synonyms:	PT-ALPHA; PTA
Protein Families:	Transmembrane



[View online »](#)

Protein Pathways: Notch signaling pathway

**Product images:**



Western blot analysis of TCR-alpha expression in Jurkat cell lysate.