

Product datasheet for **TA319109**

TGF beta Receptor II (TGFBR2) Rabbit Polyclonal Antibody

Product data:

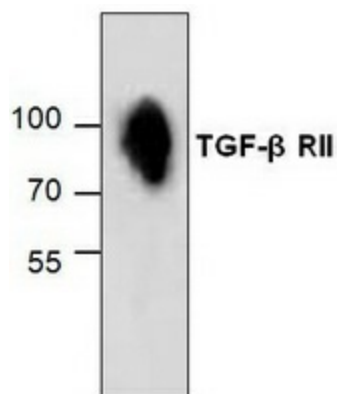
Product Type:	Primary Antibodies
Applications:	WB
Recommended Dilution:	WB: 0.5-4 ug/ml, IHC: 5 ug/ml
Reactivity:	Human, Mouse, Rat
Host:	Rabbit
Isotype:	IgG
Clonality:	Polyclonal
Immunogen:	Synthetic peptide surrounding amino acid 555 of rat TGF- β Receptor II.
Formulation:	100 μ g (0.5 mg/ml) affinity purified rabbit polyclonal antibody in phosphate buffered saline (PBS), pH 7.2, containing 30% glycerol, 0.5% BSA, 0.01% thimerosal.
Concentration:	lot specific
Purification:	Affinity purified
Conjugation:	Unconjugated
Storage:	Store at -20°C as received.
Stability:	Stable for 12 months from date of receipt.
Gene Name:	transforming growth factor beta receptor 2
Database Link:	NP_003233 Entrez Gene 21813 Mouse Entrez Gene 81810 Rat Entrez Gene 7048 Human P37173
Background:	TGF- β (Transforming growth factor-beta superfamily members are critical regulators of cell proliferation, differentiation, morphogenesis, and pathogenesis. TGF-beta receptor is a serine/threonine kinase receptor complex that consists of two distinct transmembrane proteins known as type I and type II receptors. In response to ligand binding, the type II receptors form a stable complex with the type I receptors allowing phosphorylation and thus activation of the type I receptor kinases.
Synonyms:	AAT3; FAA3; LDS1B; LDS2; LDS2B; MFS2; RIIC; TAAD2; TGFbeta-RII; TGFR-2
Protein Families:	Druggable Genome, Protein Kinase, Transmembrane



[View online »](#)

Protein Pathways: Adherens junction, Chronic myeloid leukemia, Colorectal cancer, Cytokine-cytokine receptor interaction, Endocytosis, MAPK signaling pathway, Pancreatic cancer, Pathways in cancer, TGF-beta signaling pathway

Product images:



Western blot analysis of TGF-beta Receptor II in rat kidney tissue lysate.