

Product datasheet for **TA319107**

Retnla Rabbit Polyclonal Antibody

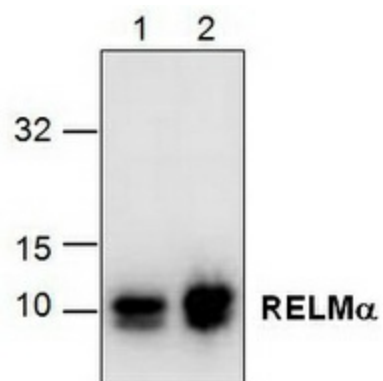
Product data:

Product Type:	Primary Antibodies
Applications:	WB
Recommended Dilution:	WB: 0.5-4 ug/ml
Reactivity:	Mouse
Host:	Rabbit
Isotype:	IgG
Clonality:	Polyclonal
Immunogen:	E. coli expressed recombinant murine RELMa
Formulation:	100 µg (0.5 mg/ml) affinity purified rabbit polyclonal antibody in phosphate-buffered saline (PBS) containing 30% glycerol, 0.5% BSA, and 0.01% thimerosal.
Concentration:	lot specific
Purification:	Affinity purified
Conjugation:	Unconjugated
Storage:	Store at -20°C as received.
Stability:	Stable for 12 months from date of receipt.
Gene Name:	resistin like alpha
Database Link:	NP_065255 Entrez Gene 57262 Mouse Q9EP95
Background:	RELM-alpha belongs to a unique family of tissue-specific cytokines termed FIZZ (found in inflammatory zone) and RELM. The three known members of this family; Resistin, RELM-alpha and RELM-beta are 85-94 amino acid secreted proteins sharing a conserved C-terminal domain characterized by 10 cysteine residues with a unique spacing motif of C-X11-C-X8-C-X-C-X3-C-X10-C-X-C-X-C-X9-C-C. RELM-alpha and Resistin are secreted exclusively by adipocytes while RELM-beta is expressed in the epithelium of the colon and small bowel. The physiological role and molecular targets of RELM-alpha are still unknown. Murine RELM-alpha is a 10.0 kDa monomeric protein containing 88 amino acid residues.
Synonyms:	1810019L16Rik; Fizz-1; Fizz1; HIMF; Himf; RELM-alpha; RELMa; RELMalpha; Xcp2



[View online »](#)

Product images:



Western blot analysis of RELM-alpha expression using recombinant murine RELM-alpha. Lane 1: 250 ng, Lane 2: 1 ug.