

Product datasheet for **TA319100**

MIF Rabbit Polyclonal Antibody

Product data:

Product Type:	Primary Antibodies
Applications:	WB
Recommended Dilution:	WB: 0.5-4 ug/ml, IP: 5-10ug/ml
Reactivity:	Mouse, Rat
Host:	Rabbit
Isotype:	IgG
Clonality:	Polyclonal
Immunogen:	Synthetic peptide surrounding amino acid 67 of human MIF
Formulation:	100 µg (0.2 mg/ml) affinity purified rabbit anti-MIF polyclonal antibody in phosphate buffered saline (PBS), pH 7.2, containing 30% glycerol, 0.5% BSA, 0.01% thimerosal.
Concentration:	lot specific
Purification:	Affinity purified
Conjugation:	Unconjugated
Storage:	Store at -20°C as received.
Stability:	Stable for 12 months from date of receipt.
Gene Name:	macrophage migration inhibitory factor (glycosylation-inhibiting factor)
Database Link:	NP_002406 Entrez Gene 17319 Mouse Entrez Gene 81683 Rat P14174
Background:	MIF (macrophage migration inhibitory factor) was one of the first cytokine activities to be discovered and was initially described as a T cell-derived factor that inhibits the random migration of microphages. Recently, MIF was rediscovered as a pituitary hormone that acts as the counter-regulatory hormone for glucocorticoid action within the immune system. MIF was released from macrophages and T-cells in response to physiological concentrations of glucocorticoids. The secreted MIF counter-regulates the immunosuppressive effects of steroids on immune cell activation and cytokine production. MIF also plays a critical role in the host control of inflammation and immunity.
Synonyms:	GIF; GLIF; MMIF

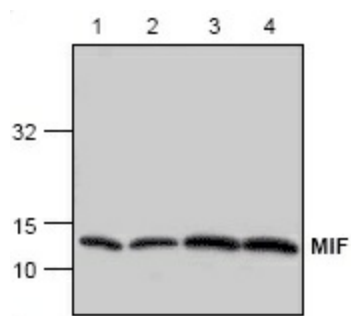


[View online »](#)

Protein Families: Druggable Genome

Protein Pathways: Phenylalanine metabolism, Tyrosine metabolism

Product images:



Western blot analysis of MIF expression in lysates from Jurkat (Lane 1, 2), 3T3 (Lane 3) and rat kidney (Lane 4).