

## Product datasheet for **TA319098**

### MMP9 Rabbit Polyclonal Antibody

#### Product data:

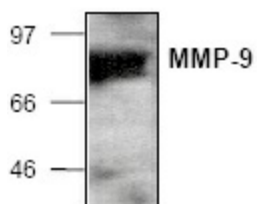
Product Type:	Primary Antibodies
Applications:	WB
Recommended Dilution:	WB: 0.5-4 ug/ml, IP: 4-8ug/ml, IHC: 20-40 ug/ml
Reactivity:	Rat
Host:	Rabbit
Isotype:	IgG
Clonality:	Polyclonal
Immunogen:	E. coli-expressed active rat 92-kDa type IV collagenase
Formulation:	100 µg (0.5 mg/ml) affinity purified rabbit anti-rat MMP-9 polyclonal antibody in phosphate buffered saline (PBS), pH 7.2, containing 50% glycerol, 1% BSA, 0.02% thimerosal.
Concentration:	lot specific
Purification:	Affinity purified
Conjugation:	Unconjugated
Storage:	Store at -20°C as received.
Stability:	Stable for 12 months from date of receipt.
Gene Name:	matrix metalloproteinase 9
Database Link:	<a href="#">NP_004985</a> <a href="#">Entrez Gene 81687 Rat P14780</a>
Background:	The mammalian Matrix metalloproteinases (MMPs) degrade extracellular matrix in physiological and pathological processes. After cleavage of a single peptide domain of about 20 amino acids, the MMPs are secreted in latent forms. Upon activation, the N-terminal propeptide domain is cleaved to generate the active forms of MMP. MMP-9 (92 kDa type IV collagenase, Gelatinase-B) contains the basic structure of propeptide, catalytic, and hemopexin domains. It is an important proteinase in tissue remodeling.
Synonyms:	CLG4B; GELB; MANDP2; MMP-9
Protein Families:	Druggable Genome, Protease



[View online »](#)

Protein Pathways: Bladder cancer, Leukocyte transendothelial migration, Pathways in cancer

**Product images:**



Western blot analysis of MMP-9 in the supernatant of rat MMP transfected cells.