

Product datasheet for **TA319097**

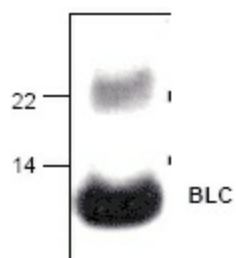
BCA1 (CXCL13) Rabbit Polyclonal Antibody

Product data:

Product Type:	Primary Antibodies
Applications:	WB
Recommended Dilution:	WB: 0.5-4 ug/ml
Reactivity:	Human
Host:	Rabbit
Isotype:	IgG
Clonality:	Polyclonal
Immunogen:	E. coli expressed recombinant mouse BLC
Formulation:	100 µg (0.5 mg/ml) affinity purified rabbit polyclonal antibody in phosphate-buffered saline (PBS) containing 30% glycerol, 0.5% BSA, and 0.01% thimerosal.
Concentration:	lot specific
Purification:	Affinity purified
Conjugation:	Unconjugated
Storage:	Store at -20°C as received.
Stability:	Stable for 12 months from date of receipt.
Gene Name:	C-X-C motif chemokine ligand 13
Database Link:	NP_006410 Entrez Gene 10563 Human O43927
Background:	BLC (B-lymphocyte chemoattractant) is a 12 kDa ELR-CXC chemokine. BLC showed high levels of expression in spleen, Peyer's patches, and mesenteric lymph nodes. BLC is reported as the ligand of CXCR5. It attracts primarily B cells in vitro. Cell lines transfected with CXCR5 demonstrate both chemotaxis and calcium flux in response to BLC.
Synonyms:	ANGIE; ANGIE2; BCA-1; BCA1; BLC; BLR1L; SCYB13
Protein Families:	Druggable Genome, Secreted Protein
Protein Pathways:	Chemokine signaling pathway, Cytokine-cytokine receptor interaction



[View online »](#)

Product images:

Western blot analysis of mouse BLC in transfected supernatant.