

Product datasheet for **TA319092**

PDGF beta (PDGFB) Rabbit Polyclonal Antibody

Product data:

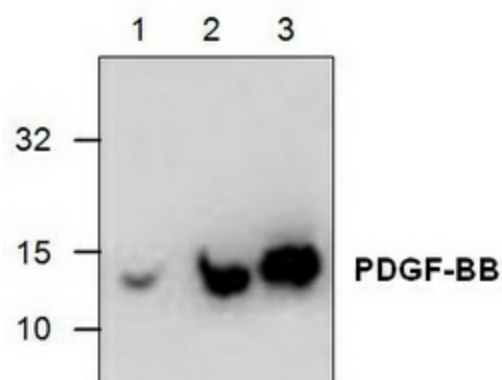
Product Type:	Primary Antibodies
Applications:	WB
Recommended Dilution:	WB: 0.5-4 ug/ml
Reactivity:	Mouse
Host:	Rabbit
Isotype:	IgG
Clonality:	Polyclonal
Immunogen:	E. coli expressed murine PDGF-BB
Formulation:	100 µg (0.5 mg/ml) affinity purified rabbit polyclonal antibody in phosphate-buffered saline (PBS) containing 30% glycerol, 0.5% BSA, and 0.01% thimerosal.
Concentration:	lot specific
Purification:	Affinity purified
Conjugation:	Unconjugated
Storage:	Store at -20°C as received.
Stability:	Stable for 12 months from date of receipt.
Gene Name:	platelet derived growth factor subunit B
Database Link:	NP_002599 Entrez Gene 18591 Mouse P01127
Background:	Mouse Platelet Derived Growth Factor (PDGF) is a potent mitogen for a wide range of cell types including fibroblasts, smooth muscle and connective tissue. PDGF-BB is a 24.4.0 kDa protein containing 109 amino acid residues. The reduced form of PDGF-BB shows ~14-18 kDa on SDS-PAGE.
Synonyms:	c-sis; IBGC5; PDGF-2; PDGF2; SIS; SSV
Protein Families:	Druggable Genome



[View online »](#)

Protein Pathways: Cytokine-cytokine receptor interaction, Focal adhesion, Gap junction, Glioma, MAPK signaling pathway, Melanoma, Pathways in cancer, Prostate cancer, Regulation of actin cytoskeleton, Renal cell carcinoma

Product images:



Western blot analysis using recombinant murine PDGF-BB. Lane 1: 50 ng, Lane 2: 250 ng, Lane 3: 1 ug.