

## Product datasheet for **TA319083**

### **SDF1 (CXCL12) Rabbit Polyclonal Antibody**

#### **Product data:**

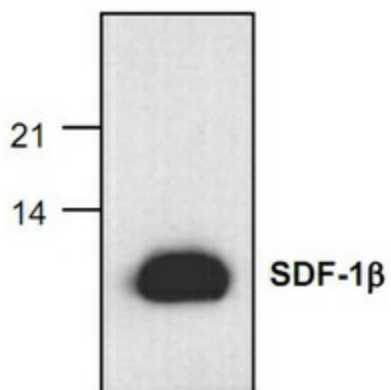
Product Type:	Primary Antibodies
Applications:	WB
Recommended Dilution:	WB: 1:1000-2500, IP
Reactivity:	Mouse, Rat
Host:	Rabbit
Isotype:	IgG
Clonality:	Polyclonal
Immunogen:	E. coli-expressed mouse SDF-1 $\beta$
Formulation:	100 $\mu$ l affinity purified rabbit polyclonal antibody in phosphate-buffered saline (PBS) containing 30% glycerol, 1% BSA and 0.02% thimerosal.
Concentration:	lot specific
Purification:	Affinity purified
Conjugation:	Unconjugated
Storage:	Store at -20°C as received.
Stability:	Stable for 12 months from date of receipt.
Gene Name:	C-X-C motif chemokine ligand 12
Database Link:	<a href="#">NP_000600</a> <a href="#">Entrez Gene 20315 Mouse</a> <a href="#">Entrez Gene 24772 Rat</a> <a href="#">P48061</a>
Background:	SDF-1 $\beta$ (stromal cell-derived factor- $\beta$ ), also known as pre-B-cell growth-stimulating factor (PBSF), is a 74-amino acid CXC chemokine originally cloned from a bone marrow stromal cell line. Targeted deletion of SDF-1 gene resulted in defects of B-cell lymphopoiesis and bone marrow myelopoiesis. SDF-1 has been shown to be chemotactic for lymphocytes. In addition, SDF-1 was recently reported to be a ligand for CXCR4 (LESTR/fusin), a co-receptor for HIV-1 entry into T cells. SDF-1 binding to CXCR4 inhibits HIV-1 entry.
Synonyms:	IRH; PBSF; SCYB12; SDF1; TLSF; TPAR1
Protein Families:	Druggable Genome, ES Cell Differentiation/IPS, Secreted Protein



[View online »](#)

**Protein Pathways:** Axon guidance, Chemokine signaling pathway, Cytokine-cytokine receptor interaction, Leukocyte transendothelial migration

**Product images:**



Western blot analysis of SDF-1beta expression in transfected cells.