

Product datasheet for **TA319081**

Lymphotactin (XCL1) Rabbit Polyclonal Antibody

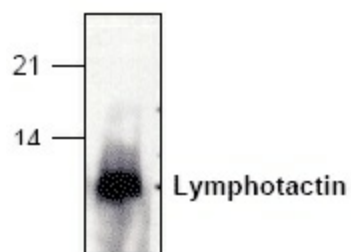
Product data:

Product Type:	Primary Antibodies
Applications:	WB
Recommended Dilution:	WB: 0.5-4 ug/ml, IP: 4-8ug/ml
Reactivity:	Mouse
Host:	Rabbit
Isotype:	IgG
Clonality:	Polyclonal
Immunogen:	E. coli-expressed mouse lymphotactin (a.a. 1-92)
Formulation:	100 µg (0.5 mg/ml) Protein A purified rabbit anti-mouse Lymphotactin polyclonal antibody in phosphate buffered saline (PBS), pH 7.2, containing 50% glycerol, 1% BSA, 0.02% thimerosal.
Concentration:	lot specific
Purification:	Affinity purified
Conjugation:	Unconjugated
Storage:	Store at -20°C as received.
Stability:	Stable for 12 months from date of receipt.
Gene Name:	X-C motif chemokine ligand 1
Database Link:	NP_002986 Entrez Gene 6375 Human P47992
Background:	Lymphotactin is the only C chemokine so far identified which has a single cysteine residue near the amino terminus. It has 114 amino acids with a 22 amino acids signal peptide. It is produced in activated CD8+ T cells and NK cells. Lymphotactin attracts both T lymphocytes and NK cells.
Synonyms:	ATAC; LPTN; LTN; SCM-1; SCM-1a; SCM1; SCM1A; SCYC1
Protein Families:	Druggable Genome, Secreted Protein
Protein Pathways:	Chemokine signaling pathway, Cytokine-cytokine receptor interaction



[View online »](#)

Product images:



Western blot analysis of mouse lymphotactin expression in transfected cells.