

## Product datasheet for **TA319080**

### Leptin (LEP) Rabbit Polyclonal Antibody

#### Product data:

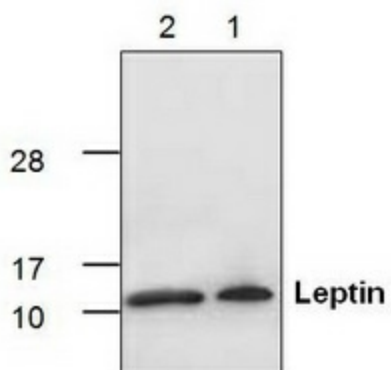
Product Type:	Primary Antibodies
Applications:	WB
Recommended Dilution:	WB: 0.5-4 ug/ml
Reactivity:	Rat
Host:	Rabbit
Isotype:	IgG
Clonality:	Polyclonal
Immunogen:	E. coli-expressed recombinant rat Leptin
Formulation:	100 µg (0.5 mg/ml) affinity purified rabbit polyclonal antibody in phosphate-buffered saline (PBS) containing 30% glycerol, 0.5% BSA, and 0.01% thimerosal.
Concentration:	lot specific
Purification:	Affinity purified
Conjugation:	Unconjugated
Storage:	Store at -20°C as received.
Stability:	Stable for 12 months from date of receipt.
Gene Name:	leptin
Database Link:	<a href="#">NP_000221</a> <a href="#">Entrez Gene 25608 Rat P41159</a>
Background:	Leptin is a recently identified protein product of the mouse obese gene. Mice with mutations in the obese gene that block the synthesis of leptin have been found to be obese and diabetic and to have reduced activity, metabolism and body temperature. cDNA clones encoding leptin have been isolated from human, simian, mouse and rat cells. The expression of leptin mRNA has been shown to be restricted to adipose tissue. Leptin plays an important role in reproduction, immunological response and neuroendocrine signaling.
Synonyms:	LEPD; OB; OBS
Protein Families:	Druggable Genome, Secreted Protein



[View online »](#)

**Protein Pathways:** Adipocytokine signaling pathway, Cytokine-cytokine receptor interaction, Jak-STAT signaling pathway, Neuroactive ligand-receptor interaction

**Product images:**



Western blot analysis using recombinant rat Leptin. Lane 1: 5 ng, Lane 2: 10 ng.