

## Product datasheet for **TA319077**

### TGF beta 2 (TGFB2) Rabbit Polyclonal Antibody

#### Product data:

Product Type:	Primary Antibodies
Applications:	WB
Recommended Dilution:	WB: 0.5-4 ug/ml
Reactivity:	Human, Mouse, Rat
Host:	Rabbit
Isotype:	IgG
Clonality:	Polyclonal
Immunogen:	E. coli expressed recombinant human TGF- $\beta$ 2
Formulation:	100 $\mu$ g (0.5 mg/ml) affinity purified rabbit polyclonal antibody in phosphate-buffered saline (PBS) containing 30% glycerol, 0.5% BSA, and 0.01% thimerosal.
Concentration:	lot specific
Purification:	Affinity purified
Conjugation:	Unconjugated
Storage:	Store at -20°C as received.
Stability:	Stable for 12 months from date of receipt.
Gene Name:	transforming growth factor beta 2
Database Link:	<a href="#">NP_003229</a> <a href="#">Entrez Gene 21808 Mouse</a> <a href="#">Entrez Gene 81809 Rat</a> <a href="#">Entrez Gene 7042 Human</a> <a href="#">P61812</a>



[View online »](#)

**Background:**

The three mammalian isoforms of TGF-beta (TGF-beta1, TGF-beta2, TGF-beta3) signal through the same receptor and elicit similar biological responses. They are multifunctional cytokines that regulate cell proliferation, growth, differentiation and motility as well as synthesis and deposition of the extracellular matrix. They are involved in various physiological processes including embryogenesis, tissue remodeling and wound healing. They are secreted predominantly as latent complexes which are stored at the cell surface and in the extracellular matrix. The release of biologically active TGF-beta isoform from a latent complex involves proteolytic processing of the complex and/or induction of conformational changes by proteins such as thrombospondin-1. TGF-beta2 has been shown to exert suppressive effects on IL-2 dependent T-cell growth, and may also have an autocrine function in enhancing tumor growth by suppressing immuno-surveillance of tumor development.

**Synonyms:**

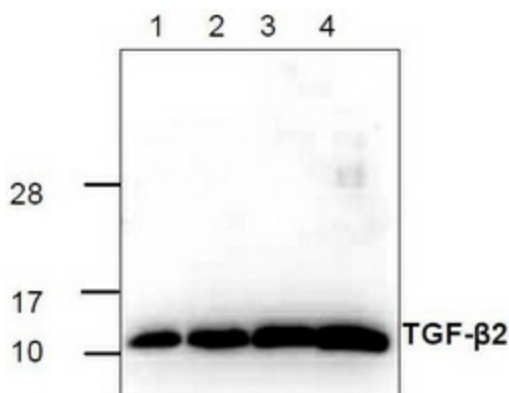
G-TSF; LDS4; TGF-beta2

**Protein Families:**

Druggable Genome, Secreted Protein, Transmembrane

**Protein Pathways:**

Cell cycle, Chronic myeloid leukemia, Colorectal cancer, Cytokine-cytokine receptor interaction, Dilated cardiomyopathy, Hypertrophic cardiomyopathy (HCM), MAPK signaling pathway, Pancreatic cancer, Pathways in cancer, Renal cell carcinoma, TGF-beta signaling pathway

**Product images:**

Western blot analysis using recombinant human TGF-beta2. Lane 1: 5 ng, Lane 2: 10 ng, Lane 3: 50 ng, Lane 4: 100 ng.