

## Product datasheet for **TA319076**

### TGF alpha (TGFA) Rabbit Polyclonal Antibody

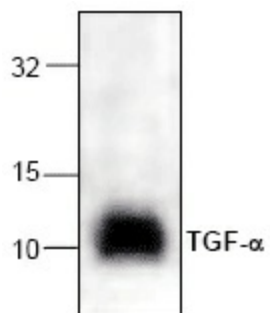
#### Product data:

Product Type:	Primary Antibodies
Applications:	WB
Recommended Dilution:	WB, Neutralization, ELISA
Reactivity:	Human
Host:	Rabbit
Isotype:	IgG
Clonality:	Polyclonal
Immunogen:	E. coli-expressed human TGF- $\alpha$
Formulation:	100 $\mu$ g (0.5 mg/ml) affinity purified rabbit polyclonal antibody in phosphate-buffered saline (PBS) containing 30% glycerol, 0.5% BSA, and 0.01% thimerosal.
Concentration:	lot specific
Purification:	Affinity purified
Conjugation:	Unconjugated
Storage:	Store at -20°C as received.
Stability:	Stable for 12 months from date of receipt.
Gene Name:	transforming growth factor alpha
Database Link:	<a href="#">NP_003227</a> <a href="#">Entrez Gene 7039 Human P01135</a>
Background:	Transforming Growth Factor-alpha (TGF- $\alpha$ ) stimulates the proliferation of a wide range of epidermal and epithelial cells. TGF- $\alpha$ has been shown to play a role in the autocrine growth of certain transformed cells.
Synonyms:	TFGA
Protein Families:	Druggable Genome, Secreted Protein, Transmembrane
Protein Pathways:	ErbB signaling pathway, Glioma, Non-small cell lung cancer, Pancreatic cancer, Pathways in cancer, Prostate cancer, Renal cell carcinoma



[View online »](#)

## Product images:



Western blot analysis using recombinant human TGF.