

Product datasheet for **TA319068**

Pannexin 1 (PANX1) Rabbit Polyclonal Antibody

Product data:

Product Type:	Primary Antibodies
Applications:	WB
Recommended Dilution:	WB: 1-2 ug/ml, ELISA
Reactivity:	Human, Mouse, Rat
Host:	Rabbit
Isotype:	IgG1
Clonality:	Polyclonal
Immunogen:	Rabbit polyclonal PANX1 antibody was raised against a 17 amino acid peptide near the amino terminus of human PANX1.
Formulation:	100 µg (0.5 mg/ml) affinity purified rabbit polyclonal antibody in phosphate-buffered saline (PBS) containing 30% glycerol, 0.5% BSA, and 0.01% thimerosal.
Concentration:	lot specific
Purification:	Affinity chromatography purified via peptide column
Conjugation:	Unconjugated
Storage:	Store at -20°C as received.
Stability:	Stable for 12 months from date of receipt.
Gene Name:	pannexin 1
Database Link:	NP_056183 Entrez Gene 55991 Mouse Entrez Gene 315435 Rat Entrez Gene 24145 Human Q96RD7

Background: The pannexin gene family encodes a second class of putative gap junction proteins and is highly conserved in invertebrates and mammals. Pannexins (Panx) are four-pass transmembrane proteins that oligomerize to form large pore ion and metabolite-permeable channels. Pannexin-1 (PANX1) and Pannexin-3 are closely related, while Pannexin-2 is a more distant relation. PANX1 is a transmembrane protein that forms a mechanosensitive ATP-permeable channel between adjacent cells and in the endoplasmic reticulum. PANX1 may play a role as a Ca²⁺-leak channel to regulate ER Ca²⁺ homeostasis and regulates neural stem and progenitor cell proliferation.

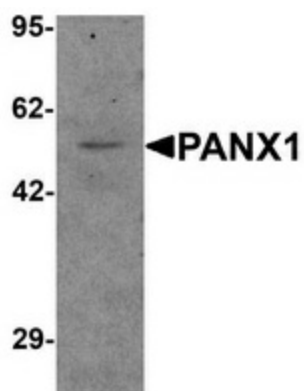


[View online »](#)

Synonyms: MRS1; PX1; UNQ2529

Protein Families: Transmembrane

Product images:



Western blot analysis of PANX1 in human ovary tissue lysate with PANX1 antibody at 1 ug/mL.