

Product datasheet for **TA319063**

LMX1B Rabbit Polyclonal Antibody

Product data:

Product Type:	Primary Antibodies
Applications:	WB
Recommended Dilution:	WB: 1-2 ug/ml, ELISA
Reactivity:	Human, Mouse, Rat
Host:	Rabbit
Isotype:	IgG1
Clonality:	Polyclonal
Immunogen:	Rabbit polyclonal LMX1B antibody was raised against a 17 amino acid peptide near the carboxy terminus of human LMX1B.
Formulation:	100 µg (0.5 mg/ml) affinity purified rabbit polyclonal antibody in phosphate-buffered saline (PBS) containing 30% glycerol, 0.5% BSA, and 0.01% thimerosal.
Concentration:	lot specific
Purification:	Affinity chromatography purified via peptide column
Conjugation:	Unconjugated
Storage:	Store at -20°C as received.
Stability:	Stable for 12 months from date of receipt.
Gene Name:	LIM homeobox transcription factor 1 beta
Database Link:	NP_002307 Entrez Gene 16917 MouseEntrez Gene 114501 RatEntrez Gene 4010 Human O60663
Background:	The LIM homeobox transcription factor 1B (LMX1B) belongs to the LIM-homeodomain family. Members of this family are known to be important for pattern formation during development. LMX1B regulates mid-hindbrain patterning; LMX1B- mice embryos have a severe reduction in the number of midbrain dopaminergic neurons compared to wild-type. While LMX1B appears to be important for both the development and the survival of dopamine neurons, the related LMX1A is crucial for the differentiation of these cells. However, LMX1A and LMX1B function cooperatively to regulated the proliferation, specification and differentiation of midbrain dopaminergic neuronal progenitors

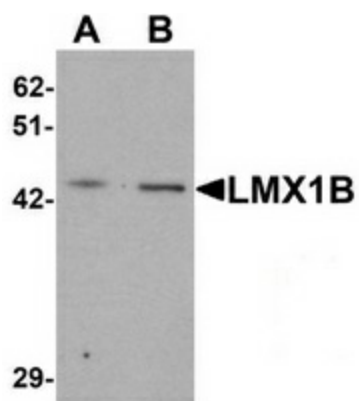


[View online »](#)

Synonyms: LMX1.2; NPS1

Protein Families: Transcription Factors

Product images:



Western blot analysis of LMX1B in A-20 cell lysate with LMX1B antibody at (A) 1 and (B) 2 ug/mL.