

Product datasheet for **TA319058**

DLK (DLK1) Rabbit Polyclonal Antibody

Product data:

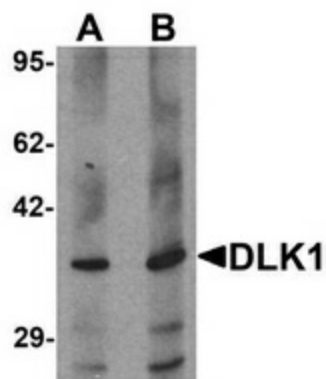
Product Type:	Primary Antibodies
Applications:	WB
Recommended Dilution:	WB: 1-2 ug/ml, ELISA
Reactivity:	Human, Mouse, Rat
Host:	Rabbit
Isotype:	IgG1
Clonality:	Polyclonal
Immunogen:	DLK1 antibody was raised against an 18 amino acid peptide near the carboxy terminus of human DLK1.
Formulation:	100 µg (0.5 mg/ml) affinity purified rabbit polyclonal antibody in phosphate-buffered saline (PBS) containing 30% glycerol, 0.5% BSA, and 0.01% thimerosal.
Concentration:	lot specific
Purification:	Affinity chromatography purified via peptide column
Conjugation:	Unconjugated
Storage:	Store at -20°C as received.
Stability:	Stable for 12 months from date of receipt.
Gene Name:	delta like non-canonical Notch ligand 1
Database Link:	NP_003827 Entrez Gene 13386 Mouse Entrez Gene 114587 Rat Entrez Gene 8788 Human P80370
Background:	The Delta-like 1 homolog (DLK1) is a transmembrane protein containing six epidermal growth factor repeats. It is involved in the differentiation of several cell types, including adipocytes and is also thought to be a tumor suppressor. The DLK1 gene is one of several imprinted genes located in a region on chromosome 14q32; certain mutations in this imprinted region can cause phenotypes similar to maternal and paternal uniparental disomy of chromosome 14 (UPD14). DLK1 is expressed from the paternal allele; a polymorphism within this gene has been associated with child and adolescent obesity.
Synonyms:	Delta1; DLK; DLK-1; FA1; pG2; Pref-1; PREF1; ZOG



[View online »](#)

Protein Families: Druggable Genome, ES Cell Differentiation/IPS, Transmembrane

Product images:



Western blot analysis of HepG2 in 293 cell lysate with DLK1 antibody at (A) 1 and (B) 2 ug/mL.