

## Product datasheet for **TA319049**

### CCL3 Rabbit Polyclonal Antibody

#### Product data:

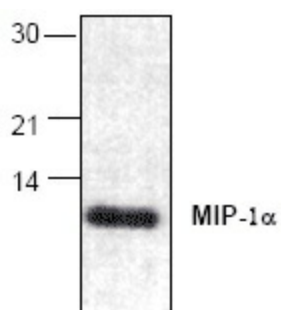
Product Type:	Primary Antibodies
Applications:	WB
Recommended Dilution:	WB: 0.5-4 ug/ml, IP: 4-8ug/ml
Reactivity:	Mouse, Rat
Host:	Rabbit
Isotype:	IgG
Clonality:	Polyclonal
Immunogen:	E. coli-expressed mature rat MIP-1a (a.a. 1-69)
Formulation:	100 µg (0.5 mg/ml) immunoaffinity purified rabbit anti-rat MIP-1a polyclonal antibody in phosphate buffered saline (PBS), pH 7.2, containing 50% glycerol, 1% BSA, 0.02% thimerosal.
Concentration:	lot specific
Purification:	Affinity purified
Conjugation:	Unconjugated
Storage:	Store at -20°C as received.
Stability:	Stable for 12 months from date of receipt.
Gene Name:	C-C motif chemokine ligand 3
Database Link:	<a href="#">NP_002974</a> <a href="#">Entrez Gene 6348 Human P10147</a>
Background:	MIP-1a (macrophage inflammatory protein-1a) is a 60-amino acid CC chemokine with a molecular weight of 7.9 kDa. MIP-1a induces migration of monocytes/macrophages, B-lymphocytes, activated CD8+ T cells, natural killer (NK) cells, eosinophils. MIP-1a also stimulates basophils to release histamine, induces ICAM-1 expression, mast cell degranulation, and production of TNF-α, IL-1 and IL-6. In addition to its proinflammatory activities, MIP-1a inhibits the proliferation of hematopoietic stem cells in vitro and in vivo.
Synonyms:	G0S19-1; LD78ALPHA; MIP-1-alpha; MIP1A; SCYA3
Protein Families:	Druggable Genome, Secreted Protein



[View online »](#)

**Protein Pathways:** Chemokine signaling pathway, Cytokine-cytokine receptor interaction, Toll-like receptor signaling pathway

**Product images:**



Western blot analysis of MIP-1-alpha with RAW264.