

Product datasheet for **TA319048**

MCP1 (CCL2) Rabbit Polyclonal Antibody

Product data:

Product Type:	Primary Antibodies
Applications:	WB
Recommended Dilution:	WB: 0.5-2 ug/ml
Reactivity:	Mouse, Rat
Host:	Rabbit
Isotype:	IgG
Clonality:	Polyclonal
Immunogen:	E. coli-expressed rat MCP-1 (a.a. 1-73)
Formulation:	100 µg (0.5 mg/ml) immunoaffinity purified rabbit anti-rat MCP-1 polyclonal antibody in phosphate buffered saline (PBS), pH 7.2, containing 50% glycerol, 1% BSA, 0.02% sodium azide.
Concentration:	lot specific
Purification:	Affinity purified
Conjugation:	Unconjugated
Storage:	Store at -20°C as received.
Stability:	Stable for 12 months from date of receipt.
Gene Name:	C-C motif chemokine ligand 2
Database Link:	NP_002973 Entrez Gene 20296 Mouse Entrez Gene 24770 Rat P13500
Background:	Rat MCP-1/JE (monocyte chemoattractant protein-1) is a 148-amino acid CC chemokine with a N-terminal sequence of 29 residues as a signal sequence. It was originally cloned from Con-A-stimulated rat spleen cDNA library. This rat MCP-1/JE is 49-amino acid longer than human MCP-1 at 3'-end. The 3'-end is a serine and threonine rich zone, which is probably responsible for the extensive O-glycosylation and which explains for the higher molecular weight (25 kDa). In vitro, MCP-1/JE is chemotactic for monocytes as well as lymphocytes and basophils, but not for neutrophils. MCP-1/JE is produced by a wide range of cell types as a reaction to diverse inflammatory stimuli.



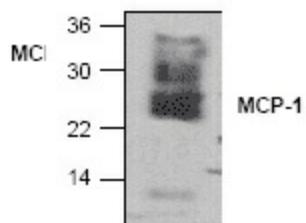
[View online »](#)

Synonyms: GDCF-2; HC11; HSMCR30; MCAF; MCP-1; MCP1; SCYA2; SMC-CF

Protein Families: Druggable Genome, Secreted Protein

Protein Pathways: Chemokine signaling pathway, Cytokine-cytokine receptor interaction, NOD-like receptor signaling pathway

Product images:



Western blot analysis of MCP-1 in LPS treated RAW cell lysate.