

Product datasheet for **TA319046**

GRO alpha (CXCL1) Rabbit Polyclonal Antibody

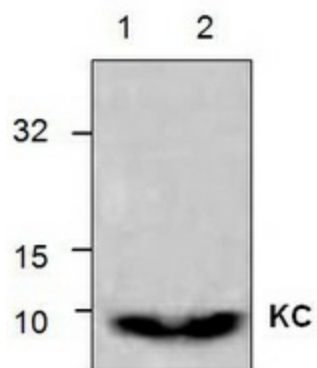
Product data:

Product Type:	Primary Antibodies
Applications:	WB
Recommended Dilution:	WB: 0.5-4 ug/ml
Reactivity:	Human, Mouse, Rat
Host:	Rabbit
Isotype:	IgG
Clonality:	Polyclonal
Immunogen:	Synthetic peptide surrounding amino acid 78 of mouse KC
Formulation:	100 µg (0.5 mg/ml) affinity purified rabbit polyclonal antibody in phosphate-buffered saline (PBS) containing 30% glycerol, 0.5% BSA, and 0.01% thimerosal.
Concentration:	lot specific
Purification:	Affinity purified
Conjugation:	Unconjugated
Storage:	Store at -20°C as received.
Stability:	Stable for 12 months from date of receipt.
Gene Name:	C-X-C motif chemokine ligand 1
Database Link:	NP_001502 Entrez Gene 14825 Mouse Entrez Gene 81503 Rat Entrez Gene 2919 Human P09341
Background:	KC, a homolog of human and hamster gro/MGSA, is a 72-amino acid CXC chemokine originally cloned from rat macrophages and lung tissue. It is the mediator for recruitment and activation of neutrophils in rat lung inflammation models. Expression of KC can be upregulated by LPS and IL-1-gamma stimulation. IFN-g blocks LPS-induced expression of KC.
Synonyms:	FSP; GRO1; GROa; MGSA; MGSA-a; NAP-3; SCYB1
Protein Families:	Druggable Genome, Secreted Protein
Protein Pathways:	Chemokine signaling pathway, Cytokine-cytokine receptor interaction, Epithelial cell signaling in Helicobacter pylori infection, NOD-like receptor signaling pathway



[View online »](#)

Product images:



Western blot analysis of KC in lysates from Jurkat cells (Lane 1) and 3T3 cells (Lane 2).