

Product datasheet for **TA319045**

Calcitonin (CALCA) Rabbit Polyclonal Antibody

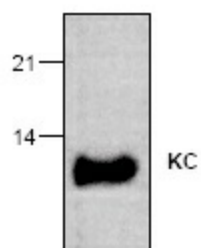
Product data:

Product Type:	Primary Antibodies
Applications:	WB
Recommended Dilution:	WB: 0.5-4 ug/ml, IHC: 5ug/ml, IP: 3-5ug/ml
Reactivity:	Mouse, Rat
Host:	Rabbit
Isotype:	IgG
Clonality:	Polyclonal
Immunogen:	E. coli-expressed rat KC
Formulation:	100 mg (0.5 mg/ml) protein A purified rabbit anti-KC polyclonal antibody in phosphate buffered saline (PBS), pH 7.2, containing 50% glycerol, 1% BSA, 0.02% thimerosal.
Concentration:	lot specific
Purification:	Affinity purified
Conjugation:	Unconjugated
Storage:	Store at -20°C as received.
Stability:	Stable for 12 months from date of receipt.
Gene Name:	calcitonin related polypeptide alpha
Database Link:	NP_001732 Entrez Gene 12310 Mouse Entrez Gene 24241 Rat P06881
Background:	KC, a homolog of human and hamster gro/MGSA, is a 72-amino acid CXC chemokine originally cloned from rat macrophages and lung tissue. It is the mediator for recruitment and activation of neutrophils in rat lung inflammation models. Expression of KC can be upregulated by LPS and IL-1 β stimulation. IFN-g blocks LPS-induced expression of KC.
Synonyms:	CALC1; CGRP; CGRP-I; CGRP1; CT; KC; PCT
Protein Families:	Druggable Genome, Secreted Protein



[View online »](#)

Product images:



Western blot analysis of KC in transfected cells.