

## Product datasheet for **TA319043**

### IL18 Rabbit Polyclonal Antibody

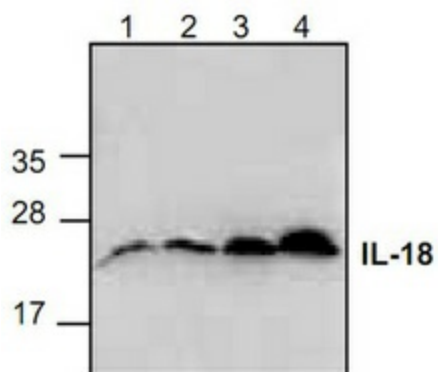
#### Product data:

Product Type:	Primary Antibodies
Applications:	WB
Recommended Dilution:	WB: 0.5-4 ug/ml, IHC: 5ug/ml
Reactivity:	Human
Host:	Rabbit
Isotype:	IgG
Clonality:	Polyclonal
Immunogen:	Synthetic peptide surrounding amino acid 41 of human IL-18
Formulation:	100 µg (0.5 mg/ml) affinity purified rabbit anti-human IL-18 polyclonal antibody in phosphate buffered saline (PBS), pH 7.2, containing 30% glycerol, 0.5% BSA, and 0.01% thimerosal.
Concentration:	lot specific
Purification:	Affinity purified
Conjugation:	Unconjugated
Storage:	Store at -20°C as received.
Stability:	Stable for 12 months from date of receipt.
Gene Name:	interleukin 18
Database Link:	<a href="#">NP_001553</a> <a href="#">Entrez Gene 3606 Human</a> <a href="#">Q14116</a>
Background:	Interleukin-18 (IL-18), an 18 kDa cytokine, is a single, non-glycosylated polypeptide chain containing 157 amino acids. IL-18 was previously known as interferon-g inducing factor (IGIF). This pleiotropic cytokine is produced by monocyte/macrophage cells. Like IL-12, IL-18 plays an important role in cell-mediated immune responses.
Synonyms:	IGIF; IL-1g; IL-18; IL1F4
Protein Families:	Druggable Genome, Secreted Protein
Protein Pathways:	Cytokine-cytokine receptor interaction, Cytosolic DNA-sensing pathway, NOD-like receptor signaling pathway



[View online »](#)

## Product images:



Western blot analysis of human IL-18 expression with Jurkat cell lysate (Lane 1 & 2).