

## Product datasheet for **TA319042**

### IL15 Rabbit Polyclonal Antibody

#### Product data:

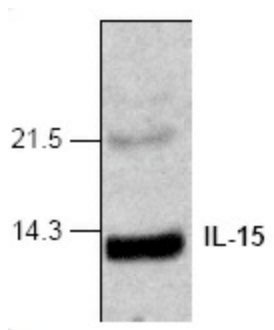
Product Type:	Primary Antibodies
Applications:	WB
Recommended Dilution:	WB: 0.5-4 ug/ml
Reactivity:	Mouse
Host:	Rabbit
Isotype:	IgG
Clonality:	Polyclonal
Immunogen:	E. coli-expressed mouse IL-15
Formulation:	100 µg (0.5 mg/ml) affinity purified rabbit polyclonal antibody in phosphate-buffered saline (PBS) containing 30% glycerol, 0.5% BSA, and 0.01% thimerosal.
Concentration:	lot specific
Purification:	Affinity purified
Conjugation:	Unconjugated
Storage:	Store at -20°C as received.
Stability:	Stable for 12 months from date of receipt.
Gene Name:	interleukin 15
Database Link:	<a href="#">NP_000576</a> <a href="#">Entrez Gene 16168 Mouse P40933</a>
Background:	IL-15 is a member of the four alpha-helical bundle family of cytokines with a molecular weight of 14-15 kDa. Its in vitro activity is very similar to IL-2, except that IL-15 utilizes the IL-15 receptor alpha subunit for binding. IL-15 plays an important role in the growth and differentiation of T and B lymphocytes, natural killer cells, macrophages, and monocytes. It also activates a number of important intracellular signaling molecules. This implies that IL-15 could be essential for the immune responses, allograft rejection, and the pathogenesis of autoimmune diseases.
Synonyms:	IL-15
Protein Families:	Druggable Genome, Secreted Protein



[View online »](#)

Protein Pathways: Cytokine-cytokine receptor interaction, Jak-STAT signaling pathway

### Product images:



Western blot analysis of Mouse IL-15 in transfected supernatant.