

## Product datasheet for **TA319041**

### IL13 Rabbit Polyclonal Antibody

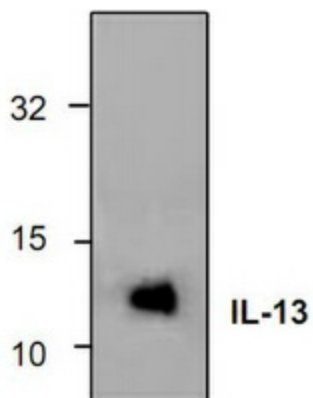
#### Product data:

Product Type:	Primary Antibodies
Applications:	WB
Recommended Dilution:	WB: 0.5-4 ug/ml
Reactivity:	Mouse
Host:	Rabbit
Isotype:	IgG
Clonality:	Polyclonal
Immunogen:	E. coli expressed recombinant mouse IL-13
Formulation:	100 µg (0.5 mg/ml) affinity purified rabbit polyclonal antibody in phosphate-buffered saline (PBS) containing 30% glycerol, 0.5% BSA, and 0.01% thimerosal.
Purification:	Affinity purified
Conjugation:	Unconjugated
Storage:	Store at -20°C as received.
Stability:	Stable for 12 months from date of receipt.
Gene Name:	interleukin 13
Database Link:	<a href="#">NP_002179</a> <a href="#">Entrez Gene 3596 Human P35225</a>
Background:	Interleukin-13 (IL-13) is an immunoregulatory protein produced by activated T lymphocytes. The biological activities of IL-13 include the stimulation of B cell proliferation and immunoglobulins production.
Synonyms:	IL-13; P600
Protein Families:	Druggable Genome, Secreted Protein, Transmembrane
Protein Pathways:	Asthma, Cytokine-cytokine receptor interaction, Fc epsilon RI signaling pathway, Jak-STAT signaling pathway



[View online »](#)

## Product images:



Western blot analysis of IL-13 expression using recombinant mouse IL-13.