

Product datasheet for **TA319037**

IL2 Rabbit Polyclonal Antibody

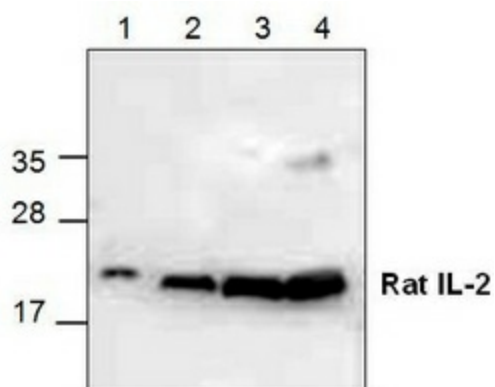
Product data:

Product Type:	Primary Antibodies
Applications:	WB
Recommended Dilution:	WB: 1-4 ug/ml
Reactivity:	Rat
Host:	Rabbit
Isotype:	IgG
Clonality:	Polyclonal
Immunogen:	E. coli expressed human IL-2
Formulation:	100 µg (0.5 mg/ml) affinity purified rabbit polyclonal antibody in phosphate-buffered saline (PBS) containing 30% glycerol, 0.5% BSA, and 0.01% thimerosal.
Concentration:	lot specific
Purification:	Affinity purified
Conjugation:	Unconjugated
Storage:	Store at -20°C as received.
Stability:	Stable for 12 months from date of receipt.
Gene Name:	interleukin 2
Database Link:	NP_000577 Entrez Gene 116562 Rat P60568
Background:	Interleukin-2 (IL-2) is a potent lymphoid cell growth factor that exerts its biological activity primarily on T cells. The antibody detects a 17.5 kDa recombinant rat IL-2 protein containing 134 amino acid residues.
Synonyms:	IL-2; lymphokine; TCGF
Protein Families:	Druggable Genome, Secreted Protein
Protein Pathways:	Allograft rejection, Autoimmune thyroid disease, Cytokine-cytokine receptor interaction, Graft-versus-host disease, Jak-STAT signaling pathway, T cell receptor signaling pathway, Type I diabetes mellitus



[View online »](#)

Product images:



Western blot analysis of IL-2 using recombinant rat IL-2.