

## Product datasheet for **TA319036**

### IL2 Rabbit Polyclonal Antibody

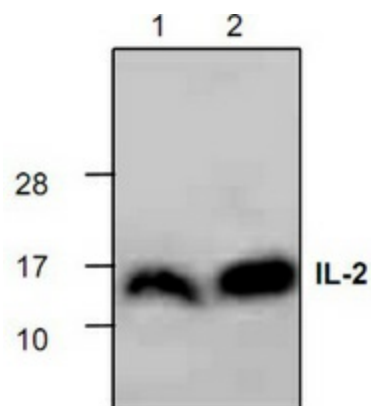
#### Product data:

Product Type:	Primary Antibodies
Applications:	WB
Recommended Dilution:	WB: 0.5-4 ug/ml, Neutralization
Reactivity:	Mouse
Host:	Rabbit
Isotype:	IgG
Clonality:	Polyclonal
Immunogen:	E. coli expressed human IL-2
Formulation:	100 µg (0.5 mg/ml) affinity purified rabbit anti-human IL-2 polyclonal antibody in phosphate buffered saline (PBS), pH 7.2, containing 30% glycerol, 0.5%BSA and 0.01% thimerosal.
Concentration:	lot specific
Purification:	Affinity purified
Conjugation:	Unconjugated
Storage:	Store at -20°C as received.
Stability:	Stable for 12 months from date of receipt.
Gene Name:	interleukin 2
Database Link:	<a href="#">NP_000577</a> <a href="#">Entrez Gene 16183 Mouse</a> <a href="#">P60568</a>
Background:	IL-2 is a potent immuno-modulator, which mediates a wide range of immune and inflammatory responses. Human IL-2 is a 15.5 kDa protein containing 134 amino acid residues.
Synonyms:	IL-2; lymphokine; TCGF
Protein Families:	Druggable Genome, Secreted Protein
Protein Pathways:	Allograft rejection, Autoimmune thyroid disease, Cytokine-cytokine receptor interaction, Graft-versus-host disease, Jak-STAT signaling pathway, T cell receptor signaling pathway, Type I diabetes mellitus



[View online »](#)

## Product images:



Western blot analysis using recombinant human IL-2. Lane 1: 50 ng, Lane 2:100 ng.