

## Product datasheet for **TA319035**

### IGF1 Rabbit Polyclonal Antibody

#### Product data:

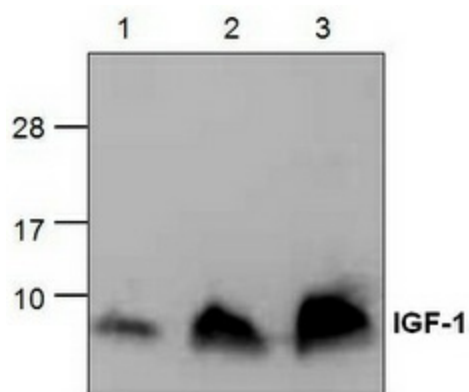
Product Type:	Primary Antibodies
Applications:	WB
Recommended Dilution:	WB: 1-4 ug/ml
Reactivity:	Rat
Host:	Rabbit
Isotype:	IgG
Clonality:	Polyclonal
Immunogen:	E. coli-expressed recombinant rat IGF-1
Formulation:	100 µg (0.5 mg/ml) affinity purified rabbit anti-IGF-1 polyclonal antibody in phosphate buffered saline (PBS), pH 7.2, containing 30% glycerol, 0.5% BSA, 5mM EDTA and 0.01% thimerosal.
Concentration:	lot specific
Purification:	Affinity purified
Conjugation:	Unconjugated
Storage:	Store at -20°C as received.
Stability:	Stable for 12 months from date of receipt.
Gene Name:	insulin like growth factor 1
Database Link:	<a href="#">NP_000609</a> <a href="#">Entrez Gene 24482 Rat P05019</a>
Background:	IGF-I (insulin-like Growth Factor-I) is a polypeptide growth factor that stimulates the proliferation of a wide range of cell types including muscle, bone, and cartilage tissue. Rat IGF-I is a 7.69 kDa protein.
Synonyms:	IGF-I; IGFI; MGF
Protein Families:	Druggable Genome, ES Cell Differentiation/IPS, Secreted Protein



[View online »](#)

**Protein Pathways:** Dilated cardiomyopathy, Focal adhesion, Glioma, Hypertrophic cardiomyopathy (HCM), Long-term depression, Melanoma, mTOR signaling pathway, Oocyte meiosis, p53 signaling pathway, Pathways in cancer, Progesterone-mediated oocyte maturation, Prostate cancer

**Product images:**



Western blot analysis using recombinant rat IGF-1. Lane 1: 50 ng, Lane 2: 100 ng, Lane 3: 200 ng.