

Product datasheet for **TA319033**

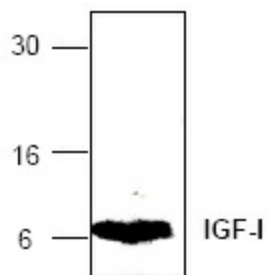
IGF1 Rabbit Polyclonal Antibody

Product data:

Product Type:	Primary Antibodies
Applications:	WB
Recommended Dilution:	WB: 0.5-4 ug/ml, Neutralization: 0.5-4 ug/ml, ELISA: 2-3 ug/ml
Reactivity:	Human
Host:	Rabbit
Isotype:	IgG
Clonality:	Polyclonal
Immunogen:	E. coli expressed human IGF-I
Formulation:	100 µg (0.5 mg/ml) affinity purified rabbit anti-human IGF-I polyclonal antibody in phosphate buffered saline (PBS), pH 7.2, containing 30% glycerol and 0.01% thimerosal.
Concentration:	lot specific
Purification:	Affinity purified
Conjugation:	Unconjugated
Storage:	Store at -20°C as received.
Stability:	Stable for 12 months from date of receipt.
Gene Name:	insulin like growth factor 1
Database Link:	NP_001104755 Entrez Gene 3479 Human P05019
Background:	IGF-I (Insulin-like Growth Factor-I) is a polypeptide growth factor that stimulates the proliferation of a wide range of cell types including muscle, bone, and cartilage tissue. Human IGF-I is a 7.6 kDa protein containing 70 amino acid residues.
Synonyms:	IGF-I; IGF1; MGF
Protein Families:	Druggable Genome, ES Cell Differentiation/IPS, Secreted Protein
Protein Pathways:	Dilated cardiomyopathy, Focal adhesion, Glioma, Hypertrophic cardiomyopathy (HCM), Long-term depression, Melanoma, mTOR signaling pathway, Oocyte meiosis, p53 signaling pathway, Pathways in cancer, Progesterone-mediated oocyte maturation, Prostate cancer



[View online »](#)

Product images:

Western blot analysis of IGF-1 with 50 ng recombinant human IGF-I.