

Product datasheet for **TA319032**

GM CSF (CSF2) Rabbit Polyclonal Antibody

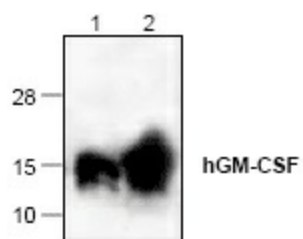
Product data:

Product Type:	Primary Antibodies
Applications:	WB
Recommended Dilution:	WB: 0.5-4 ug/ml, Neutralization: 2-10 ug/ml
Reactivity:	Human
Host:	Rabbit
Isotype:	IgG
Clonality:	Polyclonal
Immunogen:	E. coli expressed human GM-CSF
Formulation:	100 µg (0.5 mg/ml) affinity purified rabbit anti-human GM-CSF polyclonal antibody in phosphate buffered saline (PBS), pH 7.2, containing 30% glycerol, 0.5% BSA, 0.01% thimerosal
Concentration:	lot specific
Purification:	Affinity purified
Conjugation:	Unconjugated
Storage:	Store at -20°C as received.
Stability:	Stable for 12 months from date of receipt.
Gene Name:	colony stimulating factor 2
Database Link:	NP_000749 Entrez Gene 1437 Human P04141
Background:	Human GM-CSF (Granulocyte Macrophage Colony Stimulating Factor) is a potent species-specific stimulator of bone marrow cells. GM-CSF stimulates precursor cells of granulocytes, macrophages and eosinophils.
Synonyms:	GMCSF
Protein Families:	Druggable Genome, ES Cell Differentiation/IPS, Secreted Protein
Protein Pathways:	Cytokine-cytokine receptor interaction, Fc epsilon RI signaling pathway, Hematopoietic cell lineage, Jak-STAT signaling pathway, Natural killer cell mediated cytotoxicity, T cell receptor signaling pathway



[View online »](#)

Product images:



Western blot analysis of GMCSF using recombinant human GM-CSF.