

Product datasheet for **TA319031**

G CSF (CSF3) Rabbit Polyclonal Antibody

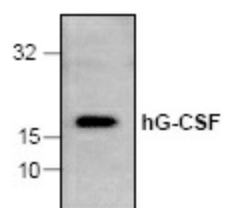
Product data:

Product Type:	Primary Antibodies
Applications:	WB
Recommended Dilution:	WB: 1-4 ug/ml
Reactivity:	Human
Host:	Rabbit
Isotype:	IgG
Clonality:	Polyclonal
Immunogen:	Synthetic peptide surrounding amino acid 195 of human G-CSF
Formulation:	100 µg (0.2 mg/ml) affinity purified rabbit anti-human G-CSF polyclonal antibody in phosphate (PBS, pH 7.2) containing 30% glycerol, 0.5 % BSA and 0.01% thimerosal.
Concentration:	lot specific
Purification:	Affinity purified
Conjugation:	Unconjugated
Storage:	Store at -20°C as received.
Stability:	Stable for 12 months from date of receipt.
Gene Name:	colony stimulating factor 3
Database Link:	NP_000750 Entrez Gene 1440 Human P09919
Background:	Granulocyte Colony Stimulating Factor (G-CSF) is a potent stimulator of bone marrow cells, especially those of neutrophil lineage. In addition, G-CSF can enhance the survival and activate the immunological functions of mature neutrophils. Human G-CSF is an 18.8 kDa protein containing 175 amino acid residues.
Synonyms:	C17orf33; CSF3OS; GCSF
Protein Families:	Druggable Genome, ES Cell Differentiation/IPS, Secreted Protein
Protein Pathways:	Cytokine-cytokine receptor interaction, Hematopoietic cell lineage, Jak-STAT signaling pathway



[View online »](#)

Product images:



Western blot analysis of G-CSF using recombinant human G-CSF.