

## Product datasheet for **TA319024**

### FGF10 Rabbit Polyclonal Antibody

#### Product data:

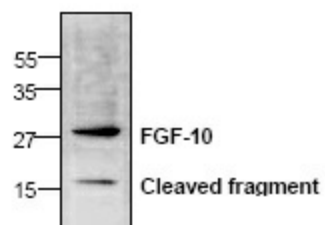
Product Type:	Primary Antibodies
Applications:	WB
Recommended Dilution:	WB: 0.5-4 ug/ml
Reactivity:	Human
Host:	Rabbit
Isotype:	IgG
Clonality:	Polyclonal
Immunogen:	E. coli expressed human FGF-10
Formulation:	100 µg (0.5 mg/ml) affinity purified rabbit polyclonal antibody in phosphate-buffered saline (PBS) containing 30% glycerol, 0.5% BSA, and 0.01% thimerosal.
Concentration:	lot specific
Purification:	Affinity purified
Conjugation:	Unconjugated
Storage:	Store at -20°C as received.
Stability:	Stable for 12 months from date of receipt.
Gene Name:	fibroblast growth factor 10
Database Link:	<a href="#">NP_004456</a> <a href="#">Entrez Gene 2255 Human</a> <a href="#">Q15520</a>
Background:	Fibroblast Growth Factor-10 (also called KGF-2) is a heparin binding growth factor that stimulates the proliferation and activation of cells that express FGF receptors. FGF-10 is mostly related to FGF-7/KGF and is expressed during development and preferentially in adult lungs.
Synonyms:	fibroblast growth factor 10; keratinocyte growth factor 2; produced by fibroblasts of urinary bladder lamina propria
Protein Families:	Adult stem cells, Druggable Genome, Embryonic stem cells, ES Cell Differentiation/IPS, Secreted Protein, Transcription Factors, Transmembrane



[View online »](#)

Protein Pathways: MAPK signaling pathway, Melanoma, Pathways in cancer, Regulation of actin cytoskeleton

**Product images:**



Western blot analysis of FGF-10 with Jurkat cell lysate.